



## Accessible Version

June 1, 2016

Congressional Committees

### Medicare: Utilization and Expenditures for Complex Wheelchair Accessories

The Medicare fee-for-service (FFS) program spends millions of dollars annually to furnish wheelchairs and wheelchair accessories to Medicare beneficiaries.<sup>1</sup> Based on medical necessity, Medicare provides coverage for a total of 73 types of wheelchairs and 193 accessories such as headrests and seat cushions. The covered wheelchairs range from basic standard manual wheelchairs to individually configured power wheelchairs with multiple power accessories for individuals with permanent or progressive conditions, such as multiple sclerosis. (See enclosure 1 for a graphic of different types of wheelchairs.) Some manual and power wheelchairs can accommodate complex rehabilitative technology (CRT) accessories—and are referred to as CRT wheelchairs.

Both we and the Department of Health and Human Services' Office of Inspector General have reported that Medicare and its beneficiaries have sometimes paid higher-than-market rates for power wheelchairs and other durable medical equipment (DME) items.<sup>2</sup> To achieve savings on these items, Congress required the Centers for Medicare & Medicaid Services (CMS)—the agency that oversees the Medicare program—to phase in a competitive bidding program (CBP) for certain DME items in which suppliers compete in order to provide certain DME items and services within designated competitive bidding areas.<sup>3</sup> Beginning in 2008, CMS began phasing in the CBP by rounds with each round operating in particular geographic areas for a defined period of time. The CBP started in bidding areas comprised of nine major cities and their surrounding suburbs and is currently operating in 109 bidding areas. Wheelchairs and accessories included in the CBP and provided in CBP areas are subject to competitively set payment rates that must be less than or equal to rates established for the same items by Medicare's fee schedule.<sup>4</sup> The Medicare Improvements for Patients and Providers Act of 2008 terminated the first round of the CBP and excluded a subset of CRT power wheelchairs—those

---

<sup>1</sup>Medicare is a federally financed health insurance program for individuals age 65 or over, certain individuals with disabilities and individuals with end-stage renal disease. Wheelchairs and accessories are typically obtained from durable medical equipment suppliers, who then submit claims for payment to Medicare.

<sup>2</sup>In August 2009, the U.S. Department of Health and Human Services' Office of Inspector General reported that Medicare and its beneficiaries paid almost four times the average suppliers' costs to acquire standard power wheelchairs and almost two times the average suppliers' costs to acquire complex rehabilitation power wheelchair packages during the first half of 2007. Office of Inspector General, Department of Health and Human Services, *Power Wheelchairs in the Medicare Program: Supplier Acquisition Costs and Services*, OEI-04-07-00400 (Washington, D.C.: August 2009). GAO, *Medicare: Review of the First Year of CMS's Durable Medical Equipment Competitive Bidding Program's Round 1 Rebid*, [GAO-12-693](#) (Washington, D.C.: May 9, 2012).

<sup>3</sup>DME suppliers submit bids to provide all of the items within a specific product category. A product category is a grouping of related items used to treat a similar medical condition.

<sup>4</sup>The fee schedule is a listing of fees used by Medicare to pay for DME. Fees are adjusted for each state, reflecting the geographic price differences that are subject to national floor and ceiling payment limits. In the competitive

in group 3 and higher—and related accessories when furnished in connection with those wheelchairs from being included in subsequent rounds of the CBP.<sup>5</sup> This resulted in different payment rates in CBP areas for some accessories depending on the type of wheelchair with which they were used: Medicare paid a higher fee schedule payment rate when the accessory was furnished in connection with a CRT power group 3 wheelchair because such rates were not subject to the CBP, and it paid a lower competitively set payment rate when the accessory was furnished with other wheelchairs. (See enclosure 2 for a timeline of legislation pertinent to the CBP.)

The Patient Protection and Affordable Care Act required CMS to use competitive bid information to adjust payment rates for competitively bid DME items in areas of the country that had not been included in previous rounds of the CBP on or after January 1, 2016.<sup>6</sup> On that date, adjusted fee schedule payment rates based on competitive bidding information went into effect in non-CBP areas for items that had been or are currently included in the CBP.<sup>7</sup> CMS provided that these CBP-adjusted fee schedule payment rates would be phased in using a 50/50 blended rate for 6 months—that is, a rate midway between the higher unadjusted fee schedule payment rates that would have otherwise been in effect and the lower CBP-adjusted rates—after which the 100 percent fully CBP-adjusted rates would go into effect. CMS included accessories used with various types of wheelchairs in these payment rate adjustments, including accessories that previously had not been paid at competitive bidding rates when provided with CRT power group 3 wheelchairs.<sup>8</sup>

The Patient Access and Medicare Protection Act enacted on December 28, 2015, delayed for 1 year the application of CBP-adjusted payment rates to non-CBP areas for accessories furnished in connection with CRT power group 3 wheelchairs.<sup>9</sup> Under current law, all wheelchair accessories will be paid for at the reduced competitive bidding rates starting January 1, 2017. The law included a provision that GAO study and report by June 1, 2016, on Medicare utilization and expenditures for wheelchair accessories.

In this report, we provide information about

---

bidding program, DME suppliers submit bids for each competitive bidding area and product category, thus the same DME item may have a different competitively set payment rate in each competitive bidding area.

<sup>5</sup>Pub. L. No. 110-275, § 154(a)(1), 122 Stat. 2494, 2560 (codified in pertinent part at 42 U.S.C. § 1395w-3(a)(1)(D)(i), (2)(A)). CMS classifies power wheelchairs into five groups ranging from wheelchairs with no special features to those that can accommodate CRT. Some group 2 wheelchairs and all group 3 wheelchairs can accommodate CRT accessories. According to CMS, group 4 wheelchairs have added capabilities that are not needed for use in the home and are not covered by Medicare. Group 5 wheelchairs are pediatric and are infrequently paid for by Medicare. We are using CRT power group 3 wheelchairs to refer to CRT power group 3 and higher wheelchairs throughout this report.

<sup>6</sup>Pub. L. No. 111-148, § 6410(b), 124 Stat. 119, 773 (2010) (codified at 42 U.S.C. § 1395m(a)(1)(F)).

<sup>7</sup>Items only included in the terminated CBP round 1 did not have their fee schedule payment rates adjusted.

<sup>8</sup>CMS established a uniform, weighted fee for accessories with the same HCPCS code regardless of the type of wheelchair it was used with. This included certain accessories used with CRT power group 3 wheelchairs in this expansion, although they had not previously been paid at competitive bidding rates.

<sup>9</sup>Pub. L. No. 114-115, § 2(a), 129 Stat. 3131 (2015). CMS, which had already prepared to implement the 50/50 blended rate on January 1, 2016, indicated that it was unable to implement this delay until July 1, 2016, until which time the blended rate would remain in effect and after which adjustments would be made for previously paid claims.

1. the utilization and expenditures for Medicare wheelchairs and accessories, in particular for CRT power group 3 wheelchairs and the accessories used with them; and
2. how the 2016 CBP-adjusted payment rates for accessories, in particular those furnished in connection with CRT power group 3 wheelchairs, compare to the 2016 unadjusted fee schedule payment rates for the same items.

To estimate utilization and expenditures for wheelchairs and accessories, we examined Medicare claims data from 2014, the most recent year with complete claims data. We identified a complete list of Medicare-approved wheelchairs and accessories, including seating systems and cushions, in consultation with CMS. Because the claims data do not provide a way to definitively match each provided accessory to the type of wheelchair with which it was used, we matched each accessory to the most recent wheelchair the beneficiary received in 2013 or 2014. For example, we matched an accessory to a CRT power group 3 wheelchair if the accessory was provided to the beneficiary at the same time or if the accessory was provided at a later date and the most recent wheelchair received by the beneficiary was a CRT power group 3 wheelchair. We were unable to match all accessories to wheelchairs, so we extrapolated from the distribution of accessories that we were able to match to a chair to estimate the distribution across all wheelchairs.

To compare the 2016 50/50 blended CBP-adjusted payment rates for wheelchair accessories with the 2016 unadjusted fee schedule payment rates for the same items, we used fee schedule data. We calculated the average payment rate across urban areas for each wheelchair accessory and compared that to CMS's published 50/50 blended rate by determining the percentage difference.<sup>10</sup> We assessed the reliability of the Medicare claims and fee schedule data by reviewing relevant documentation and interviewing CMS officials and other stakeholders. We determined that these data were sufficiently reliable for the purposes of our reporting objectives. (See enclosure 3 for more details on our scope and methodology.)

We conducted this performance audit from February 2016 through June 2016 in accordance with generally accepted government auditing standards. Those standards require that we plan and perform the audit to obtain sufficient, appropriate evidence to provide a reasonable basis for our findings based on our audit objectives. We believe that the evidence obtained provides a reasonable basis for our findings based on our audit objectives.

### Results in Brief

In 2014, Medicare furnished 603,000 wheelchairs and 1.7 million wheelchair accessories to beneficiaries at a cost of \$309 million and \$311 million respectively. Of this \$620 million, Medicare paid 80 percent of the cost and beneficiaries were responsible for 20 percent. CRT power group 3 wheelchairs and the accessories used with these chairs accounted for a relatively small percentage of total Medicare utilization but a much larger share of total expenditures: these wheelchairs accounted for 2 percent (about 13,000) of all wheelchair utilization and 22 percent (about \$69 million) of expenditures, while accessories used with them accounted for 18 percent (about 312,000) of all accessory utilization and 51 percent (about

---

<sup>10</sup>Wheelchair accessories can have multiple CBP-adjusted and unadjusted fee schedule rates, which can vary based on geography and other factors. The fully transitioned 100 percent CBP-adjusted payment rates are required to be updated based on new competitive bidding information. 42 U.S.C. § 1395m(a)(1)(F)(iii). These rates were not available at the time of our analysis.

\$159 million) of all accessory expenditures. Medicare expenditures on accessories used with CRT power group 3 wheelchairs were concentrated in a small number of accessories. The top accessory—a combination tilt and recline power seating system—accounted for an estimated \$56 million, or 35 percent, of total expenditures on accessories used with these chairs. The top 10 accessories accounted for 82 percent of expenditures for CRT power group 3 wheelchair accessories.

The 2016 CBP-adjusted payment rates for all wheelchair accessories are lower than the 2016 unadjusted fee schedule payment rates, although the magnitude of the difference varied by wheelchair accessory. Among the 10 accessories with the highest estimated expenditures when used with CRT power group 3 wheelchairs, 8 had CBP-adjusted payment rates, and the average 50/50 CBP-adjusted rates for these ranged from 5 to 17 percent lower than the unadjusted fee schedule payment rates. The difference between these rates will likely be larger when the fee schedule payment rates are fully transitioned to 100 percent CBP-adjusted rates.

### Background

Medicare pays for a variety of manual and power wheelchairs that differ in complexity and capabilities. Medicare typically only pays for a new wheelchair for a beneficiary every 5 years or when a physician determines it is medically necessary. Wheelchairs range from manual standard wheelchairs suitable for beneficiaries who cannot use a cane or walker safely, but have enough upper body strength or have a caregiver to maneuver it, to CRT power wheelchairs for those beneficiaries who are unable to walk, have severe upper body weakness and require special features to accommodate their physical condition. Based on these differences, we categorized the chairs into 5 types: (1) CRT power group 3 wheelchairs, (2) other CRT power wheelchairs—typically in group 2, (3) CRT manual wheelchairs, (4) standard power wheelchairs, and (5) standard manual wheelchairs.<sup>11</sup> (See enclosure 4 for information on the different wheelchairs covered by Medicare.)

Medicare requires that all power wheelchairs include a basic equipment package that includes a lap or safety belt; tires; seating; leg and footrests; arms; and battery charger.<sup>12</sup> These items are included in the price of the wheelchair. In addition, depending on individual beneficiaries' needs and physician approval, some wheelchairs can be customized with different accessories—such as an adjustable angle footplate—that are billed separately. In 2014, payment rates for new CRT power group 3 wheelchairs ranged from approximately \$9,000 to \$25,000.

Medicare payment rates for wheelchairs and accessories are based on Healthcare Common Procedure Coding System (HCPCS) classification.<sup>13</sup> Payment amounts for wheelchairs include

---

<sup>11</sup>CRT power group 3 wheelchairs have higher performance levels than CRT power group 2 wheelchairs. This includes increased stability on uneven terrain, increased climbing ability on ramps and over obstacles, and a longer driving range.

<sup>12</sup>Medicare pays separately for power wheelchair batteries. The price of a standard manual wheelchair also includes tires; legs and footrests; and arms.

<sup>13</sup>The HCPCS coding system is divided into two principal subsystems, referred to as level I and level II. Level I of the HCPCS is a numeric coding system maintained by the American Medical Association and used primarily to identify medical services and procedures furnished by physicians and other health care professionals. Level II of the HCPCS is a standardized coding system that is used primarily to identify products, supplies, and services, such as ambulance services and DME.

both the supplier’s price of the wheelchair and associated services, such as assembling and delivering the wheelchair and educating the beneficiary about its use. Individual HCPCS codes include items that serve the same general purpose but vary in price, characteristics, and technology. For example, the HCPCS code for headrests (E0955) includes both a standard headrest and a multi-point head support system.<sup>14</sup> (See enclosure 5 for a list of wheelchair accessory HCPCS codes and descriptions.) HCPCS codes also include modifiers that provide billing information, such as whether the item was purchased new or used or rented. Medicare pays for most wheelchairs and accessories based on HCPCS-level payment rates published in its fee schedule; however, certain HCPCS codes—such as highly customized items—are priced individually by local Medicare contractors.

Utilization and Expenditures for Wheelchairs and Accessories

Wheelchairs

In 2014, CRT power group 3 wheelchairs represented about 2 percent of all Medicare wheelchair utilization (13,000 chairs), but about 22 percent of expenditures (\$69 million). (See table 1.)

**Table 1: Medicare Utilization and Expenditures of Wheelchairs, by Type, 2014**

<b>Wheelchair type</b>	<b>Utilization (thousands)</b>	<b>Percent</b>	<b>Expenditures (millions)</b>	<b>Percent</b>
CRT, power, group 3	13	2	69	22
CRT, power, other	2	<1	6	2
CRT, manual	12	2	20	7
Standard, power	61	10	89	29
Standard, manual	515	86	125	41
<b>Total</b>	<b>603</b>	<b>100</b>	<b>309</b>	<b>100</b>

Source: GAO analysis of Centers for Medicare & Medicaid Services data. | GAO-16-640R

Legend: CRT = Complex Rehabilitative Technology.

Note: Utilization is the count of all wheelchairs beneficiaries bought or rented during 2014. Expenditures accounted for spending by the Medicare program and by beneficiaries.

Among CRT power group 3 wheelchairs, the majority of utilization and expenditures were concentrated in 3 of the 17 wheelchair codes, which varied based on the number of powered features—such as tilt, recline, or elevating leg rests—the wheelchair could support. The CRT power group 3 wheelchair with the highest utilization and expenditures was HCPCS code K0861, a chair with multiple powered features. Specifically, in 2014, about 7,000 of these CRT power group 3 wheelchairs were purchased or rented for \$39 million in expenditures.

Accessories

We estimated that 18 percent (about 312,000) of the 1.7 million wheelchair accessories Medicare beneficiaries received during 2014 were used with CRT power group 3 wheelchairs, but that these accessories accounted for 51 percent of Medicare expenditures on wheelchair accessories (\$159 million of \$311 million total). Beneficiaries who used CRT power group 3 wheelchairs generally received more accessories than those receiving other wheelchairs.

<sup>14</sup>For a multi-point head support system, the supplier is also able to receive payment for the positioning hardware (E1028) component of the system, whereas this additional payment is not allowed for standard head rests.

Medicare expenditures on accessories used with CRT power group 3 wheelchairs were concentrated in a small number of accessory codes. The accessory associated with the highest expenditures—a power seating system with combination tilt and recline (E1007)—accounted for an estimated 35 percent of all expenditures on accessories used with these wheelchairs, or \$56 million. The top 10 accessories in terms of expenditures accounted for 82 percent of all expenditures, or about \$130 million. (See table 2). The top 50 accessories accounted for 99 percent of all expenditures on accessories used with CRT power group 3 wheelchairs. (See enclosure 6 for information on Medicare utilization and expenditures for wheelchair accessories, and the frequency they were used with CRT power group 3 wheelchairs in 2014.)

**Table 2: Medicare Utilization and Expenditures for the Ten Wheelchair Accessories with the Highest Estimated Expenditures When Used with CRT Power Group 3 Wheelchairs, 2014**

Code	Accessory description	2014 utilization and expenditures			
		Total		Estimate when used with CRT Power G3	
		Utilization (thousands)	Expenditures (millions)	Percent of items	Expenditures (millions)
E1007	Power seating system, tilt and recline, mechanical shear reduction	7	58	97	56
E2311	Electronic connection, between controller and two or more power seating system motors	9	20	93	19
K0108	Wheelchair accessories, not otherwise specified	133	21	49	16
E1002	Power seating system, tilt only	5	18	77	14
E1028	Mounting hardware for joystick, control interface, or positioning accessory	50	9	70	7
E1008	Power seating system, tilt and recline, power shear reduction	1	5	97	5
E2361	Battery, group 22NF	51	6	61	4
E2377	Expandable controller	8	4	96	4
E2313	Harness, for upgrade to expandable controller	9	3	95	3
E2620	Back cushion, positioning, planar back with lateral supports, width < 22 in.	9	5	70	3
<b>N/A</b>	<b>Subtotal of top ten</b>	<b>281</b>	<b>148</b>	<b>62</b>	<b>130</b>
<b>N/A</b>	<b>Total among all accessories</b>	<b>1,733</b>	<b>311</b>	<b>18</b>	<b>159</b>

Source: GAO analysis of Centers for Medicare & Medicaid Services data. | GAO-16-640R

Note: Utilization is the count of all wheelchair accessories beneficiaries bought or rented during 2014 and the percentage of items used with complex rehabilitative technology (CRT) power group 3 wheelchairs. Expenditures include spending by the Medicare program and by beneficiaries. The utilization and expenditures do not include accessories for which Medicare does not pay for separately—such as accessories that are part of the basic equipment package provided with a new wheelchair.

Wheelchair accessories with the highest estimated expenditures when used with CRT power group 3 wheelchairs varied in the extent to which they were used with these chairs, with some most frequently used with CRT power group 3 wheelchairs, while others were more frequently used with other types of chairs. For example, among the top 50 accessories, 17 were used with CRT power group 3 wheelchairs at least 75 percent of the time, while 12 were used with these wheelchairs less than 25 percent of the time. Additionally, all accessories used with CRT power group 3 wheelchairs can also be used with other CRT power wheelchairs, and many can also be used with CRT manual chairs.

## Change in Payment Rates for Wheelchair Accessories

The 2016 CBP-adjusted payment rates are all lower than the 2016 unadjusted fee schedule payment rates, although the magnitude of the difference varies by wheelchair accessory. Additionally, some accessory HCPCS codes—such as those for miscellaneous accessories without their own code, certain highly customized accessories, and those that were never included in the CBP—were unaffected by the changes in CMS’s policy.

Among the 10 accessories with the highest estimated expenditures when used with CRT power group 3 wheelchairs, 8 had CBP-adjusted payment rates. These average 50/50 blended CBP-adjusted payment rates ranged from 5 to 17 percent lower than the unadjusted fee schedule rates.<sup>15</sup> The differences between these rates will likely be larger when payment rates are fully transitioned to 100 percent CBP-adjusted rates.<sup>16</sup> Two other accessories were unaffected by changes in CMS’s policy. (See table 3. For the change in payment rates for the top 50 accessories, see enclosure 7.)

**Table 3: Blended CBP-Adjusted and Unadjusted Fee Schedule Payment Rates, for the Ten Wheelchair Accessories with the Highest Estimated Expenditures When Used With CRT Power Group 3 Wheelchairs**

Code	Accessory description	2016 average payment rates		
		Unadjusted	50/50 blended CBP-adjusted	Percentage difference
E1007	Power seating system, tilt and recline, mechanical shear reduction	8,329	7,856	-6
E2311	Electronic connection, between controller and two or more power seating system motors	2,257	2,141	-5
K0108	Wheelchair accessories, not otherwise specified	N/A	N/A	N/A
E1002	Power seating system, tilt only	3,862	3,645	-6
E1028	Mounting hardware for joystick, control interface, or positioning accessory	197	164	-17
E1008	Power seating system, tilt and recline, power shear reduction	8,330	7,951	-5
E2361	Battery, group 22NF	132	119	-10
E2377	Expandable controller	463	444	-4
E2313	Harness for upgrade to expandable controller	35	N/A	N/A
E2620	Back cushion, positioning, planar back with lateral supports, width < 22 in.	522	454	-13

Source: GAO analysis of Centers for Medicare & Medicaid Services data. | GAO-16-640R

Note: The average 2016 50/50 blended competitive bidding program (CBP) adjusted and unadjusted fee schedule payment rates were calculated as the average of the urban rates for each state in the contiguous United States, when the item was provided new and used with a wheelchair included in CBP round 1. If the item only had a published

<sup>15</sup>Because an accessory code can have multiple CBP-adjusted and unadjusted payment rates that can vary based on geography and other factors, the actual average payment rates and percentage differences in a particular circumstance may differ from our estimates.

<sup>16</sup>The fully transitioned 100 percent CBP-adjusted payment rates will include new competitive bidding information that goes into effect on July 1, 2016. Therefore, while the fully transitioned rates will likely have larger percentage differences from the unadjusted rates than the 50/50 blended rates, we could not estimate the exact magnitude of the difference in time for this study.

rental rate, we calculated the new purchase rate as the rental rate times 10, per CMS policy. The table includes the 10 accessories with the highest estimated expenditures when used with complex rehabilitative technology (CRT) power group 3 wheelchairs. K0108 does not have a fee schedule payment rate for the code as a whole. E2313 was never included in the CBP and therefore did not have its rate adjusted based on competitive bidding information.

-----

We provided a draft of this report to the Department of Health and Human Services for review and incorporated the agency's technical comments as appropriate.

If you or your staff have any questions about this report, please contact me at (202) 512-7114 or [kingk@gao.gov](mailto:kingk@gao.gov). Contact points for our Offices of Congressional Relations and Public Affairs may be found on the last page of this report. GAO staff who made major contributions to this report include: Martin T. Gahart, Assistant Director; Todd Anderson; Alison Binkowski; George Bogart; Cathy Hamann; Anne Hopewell; and Michelle Paluga. Vikki Porter also contributed to this report.



Kathleen M. King  
Director, Health Care



List of Committees

The Honorable Orrin Hatch  
Chairman

The Honorable Ron Wyden  
Ranking Member  
Committee on Finance  
United States Senate

The Honorable Fred Upton  
Chairman

The Honorable Frank Pallone  
Ranking Member  
Committee on Energy and Commerce  
House of Representatives

The Honorable Kevin Brady  
Chairman

The Honorable Sander Levin  
Ranking Member  
Committee on Ways and Means  
House of Representatives

## Enclosure I: Complex Rehab Technology Wheelchairs Differ from Standard Wheelchairs

**Figure 1: Complex Rehab Technology Wheelchairs Differ from Standard Wheelchairs**

Complex rehab wheelchairs are individually configured to meet the specific needs of people with permanent disabilities and are vital to a small but critical segment of Medicare wheelchair users who rely on these specialized wheelchairs for their health and independence.



**Standard Manual Wheelchairs**

- Intended for short-term use
- Minimal to zero adjustability
- No positioning
- No orthopedic accommodations
- Provides no pressure management

**Complex Manual Wheelchairs**

- Intended for long-term use
- High adjustability
- Provides positioning
- Accommodates orthopedic issues
- Provides pressure management

**Standard Power Wheelchairs**

- Intended for ambulatory limitations
- Basic joystick drive only
- No positioning
- No orthopedic accommodations
- Provides no pressure management
- No ventilator accommodation

**Complex Power Wheelchairs**

- Intended for permanent/progressive diagnoses
- Advanced electronics and controls
- Provides positioning
- Accommodates orthopedic issues
- Provides pressure management
- Offers ventilator accommodation

Source: National Coalition for Assistive and Rehab Technology. | GAO-16-640R

## Enclosure II: Pertinent Legislation and Information about the Centers for Medicare & Medicaid Services' Durable Medical Equipment Competitive Bidding Program

Between 1997 and 2015, a number of laws affected the implementation of the Centers for Medicare & Medicaid Services' (CMS) durable medical equipment (DME) competitive bidding program (CBP). (See figure 2 for a timeline of legislation and information about the competitive bidding program.) Competitive bidding can achieve savings and reduce improper payments for DME items, such as wheelchairs and wheelchair accessories, and close the disparity with prices paid by others for the same items. Under CBP, only suppliers that submit bids and that are competitively selected and awarded contracts can furnish certain DME items to Medicare beneficiaries residing in designated competitive bidding areas.<sup>1</sup> Beginning in 2008, CMS began phasing in the CBP by rounds with each round operating in particular geographic areas for a period of up to 3 years. Each "phase" or CBP round included specific product categories—a grouping of related items used to treat a similar medical condition.

DME items included in the CBP are reimbursed at competitively determined rates, which are based on bids submitted by competing suppliers and must be equal to or lower than Medicare's rates for the same items that are furnished to beneficiaries not residing in CBP areas.<sup>2</sup> Because the competitively determined rates for CBP-covered items are based only on suppliers' bids for a particular product category and competitive bidding area, rates for the same item may vary across competitive bidding areas in each round.

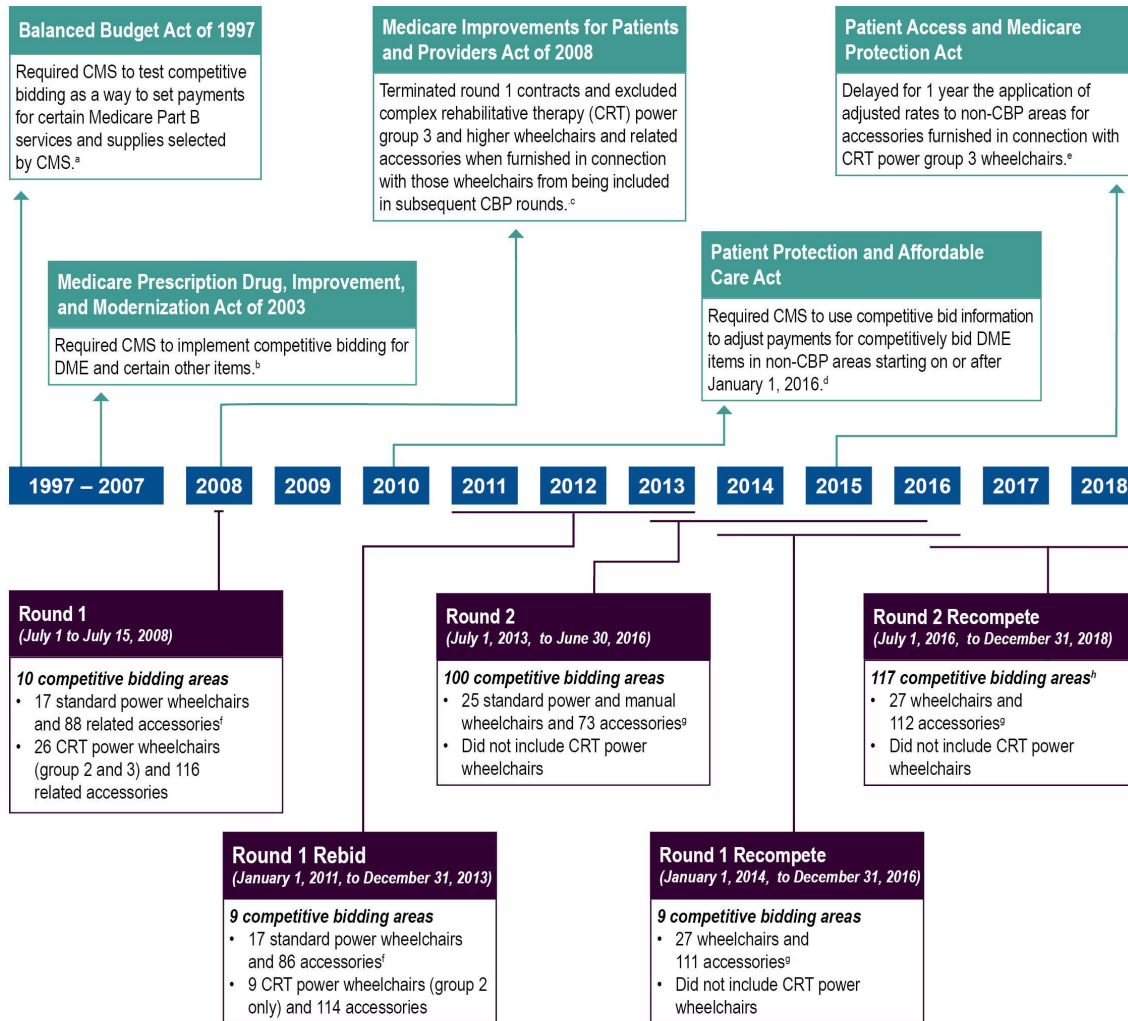
Each round of the CBP has included at least one product category with wheelchairs and accessories although the particular items included in each round may vary. For example, both complex rehabilitative technology (CRT) power group 2 and 3 wheelchairs were included in the first round, but only CRT power group 2 wheelchairs were included when CMS conducted a second bid of the terminated round 1 that CMS called the round 1 rebid. Following the round 1 rebid, CRT power wheelchairs were not included in subsequent rounds, but because accessories can be used with a variety of wheelchair bases, many accessories used with CRT power wheelchairs have been included in all rounds. (See enclosures 4 and 5 for a list of Medicare-covered wheelchairs and accessories and the extent to which they were included in the CBP.)

---

<sup>1</sup>A competitive bidding area is either a metropolitan statistical area or a part thereof. Metropolitan statistical areas are designated by the Office of Management and Budget and include major cities and the suburban areas surrounding them. For a detailed explanation of the CBP bidding process steps, see GAO, *Medicare: CMS Working to Address Problems from Round 1 of the Durable Medical Equipment Competitive Bidding Program*, [GAO-10-27](#) (Washington, D.C.: Nov. 6, 2009).

<sup>2</sup>For a general explanation of the CBP process for bidding and selecting winning suppliers, see GAO, *Medicare: Review of the First Year of CMS's Durable Medical Equipment Competitive Bidding Program's Round 1 Rebid*, [GAO-12-693](#) (Washington, D.C.: May 9, 2012).

**Figure 2: Pertinent Legislation and Information about Wheelchairs and Accessories Included in the Centers for Medicare & Medicaid Services Durable Medical Equipment Competitive Bidding Program**



Source: GAO analysis of CMS data and statutory provisions. | GAO-16-640R

<sup>a</sup>Pub. L. No. 105-33, § 4319(a), 111 Stat. 251, 392 (codified, as amended, at 42 U.S.C. § 1395w-3).

<sup>b</sup>Pub. L. No. 108-173 § 302(b), 117 Stat. 2066, 2224 (codified in pertinent part at 42 U.S.C. § 1395w-3(a)(2)(A)).

<sup>c</sup>Pub. L. No. 110-275, § 154(a), 122 Stat. 2494, 2560 (codified in pertinent part at 42 U.S.C. § 1395w-3(a)(1)(D),(2)(A)). This legislation stopped round 1 contracts two weeks after they became effective and required the Centers for Medicare & Medicaid Services (CMS) to repeat the competition in 2009.

<sup>d</sup>Pub. L. No. 111-148, § 6410(b), 124 Stat. 119, 773 (2010) (codified at 42 U.S.C. § 1395m(a)(1)(F)).

<sup>e</sup>Pub. L. No. 114-115, § 2(a), 129 Stat. 3131 (2015).

<sup>f</sup>Because many accessories can be used with a variety of wheelchairs, some of the accessories related to both complex rehabilitative technology (CRT) power wheelchairs and standard power wheelchairs were the same in the durable medical equipment (DME) competitive bidding program (CBP) round 1 and round 1 rebid.

<sup>g</sup>The round 2 includes a product category for standard power and manual wheelchairs, scooters, and related accessories. Both the round 1 recompete and round 2 recompete includes a product category for standard mobility equipment and related accessories (walkers are also included in this product category, but were not included in this figure).

<sup>h</sup>Round 2 recompete's 117 competitive bidding areas include the same 100 geographic areas that were included in round 2. However, because some round 2 competitive bidding areas cover multiple states, CMS redefined the round 2 recompete areas so each competitive bidding area only covers one state.

### Enclosure III: Methodology and Limitations

This enclosure provides further details of our methodology for calculating Medicare wheelchair and accessory utilization and expenditures, and for comparing their adjusted and unadjusted payment rates, along with the limitations of our methodology.

#### Calculating Utilization and Expenditures

To calculate utilization and expenditures for Medicare wheelchairs and accessories, we used Medicare fee-for-service claims data from the 2014 100 percent Durable Medical Equipment Standard Analytical File—the most recent year of complete data available at the time of our analysis. First, we identified the set of Healthcare Common Procedure Coding System (HCPCS) codes for Medicare-covered wheelchairs and accessories and grouped them into the wheelchair or accessory types (e.g., complex rehabilitative technology (CRT), standard or manual) based on Local Coverage Determinations and discussions with officials at the Centers for Medicare & Medicaid Services (CMS). (For a list of these HCPCS codes, their descriptions, the types into which we categorized them, and the extent to which they were included in the competitive bidding program (CBP), see enclosures 4 and 5.) We then used these lists and Medicare claims data—limited to claims for which Medicare was the primary payer—to calculate the number of wheelchairs and accessories that Medicare beneficiaries received during 2014 and the amount the Medicare program and beneficiaries spent on these items. For each HCPCS code, we calculated the number of items as the number of units that beneficiaries first received (new or used) or that were rented (counting each rented item only once, regardless of the number of months the beneficiary rented the same item). We calculated expenditures as the total allowed charges for an item, of which the Medicare program is responsible for 80 percent and beneficiaries are responsible for the remaining 20 percent (either out of pocket or through additional insurance coverage).<sup>1</sup> Because our results are based on allowed charges, our results do not include the utilization of or expenditures on accessories for which Medicare does not pay for separately (such as accessories that are part of the basic equipment package provided with a new wheelchair), nor do they include the additional charges some beneficiaries may face if the supplier does not accept assignment—in which case they may bill the beneficiary for the full cost for the item above Medicare’s allowed charges—as this information is not captured on Medicare claims.<sup>2</sup> Additionally, our results do not include the separately billable labor for repairing an item, as this is captured in the claims under a separate HCPCS code not limited to wheelchairs or accessories.

To estimate the utilization and expenditures for accessories used with CRT power group 3 wheelchairs and other types of wheelchairs, we considered an accessory to be used with the most recent wheelchair the beneficiary received at the same time or prior to the accessory.<sup>3</sup> For

---

<sup>1</sup>In 2014, Medicare beneficiaries were required to meet an annual deductible of \$104.90 prior to Medicare paying 80 percent of the cost of a DME item.

<sup>2</sup>Assignment is when a supplier agrees to be paid directly by Medicare and to accept the payment amount Medicare approves for the service. By accepting assignment, the supplier agrees not to bill a beneficiary for any more than the Medicare deductible and coinsurance.

<sup>3</sup>Medicare claims for wheelchair accessories do not provide a way to definitively match each provided accessory to the type of wheelchair, although there are modifiers that provide some information on the type of wheelchair in some

example, we matched an accessory to a CRT power group 3 wheelchair if the accessory was provided to the beneficiary at the same time or if the accessory was provided at a later date and the most recent wheelchair received by the beneficiary was a CRT power group 3 wheelchair. To balance our ability to match as many accessories as possible with the reliability of those matches, we limited our matching to wheelchairs provided during 2013 or 2014. While this methodology may have incorrectly matched some accessories to a chair, we believe the results to be sufficiently reliable for our reporting objectives. We then estimated the total utilization and expenditures for when an accessory was used with a given type of wheelchair by assuming that the distribution of the accessories we were not able to match to a wheelchair was the same as those we were able to match.

### Comparing Adjusted and Unadjusted Payment Rates

To compare the 2016 50/50 blended CBP-adjusted payment rates to the unadjusted fee schedule payment rates for the same items, we used Medicare fee schedule data. We used the most recent fee schedule data available at the time of our analysis—the rates that went into effect on January 1, 2016—reflect the transitional rates composed of a 50/50 blend of (1) the rates adjusted using competitive bidding information and (2) the unadjusted fee schedule rates that would otherwise have been in effect.<sup>4</sup> For each accessory HCPCS code, we calculated the average payment rate across urban areas for each wheelchair accessory and compared that to CMS's published 50/50 blended rate by determining the percentage difference. We calculated the average new purchase payment rate as the average of the urban rates for each state in the contiguous United States, when the item was provided new and used with a wheelchair included in CBP round 1 (such as a CRT power group 3 wheelchair). (If the item only had a published rental rate, we calculated the new purchase rate equivalent by multiplying the rental rate by 10, per CMS policy.) These percentage differences do not capture the change in payment rates in other circumstances, which were beyond the scope of this report.<sup>5</sup>

---

circumstances. For example, some claims include a modifier (KE) that assigns a specific payment amount to wheelchair accessories furnished with a wheelchair that was not included in round 1 of the CBP. However, as round 1 included both CRT power group 3 wheelchairs, other CRT power wheelchairs, and standard power wheelchairs, this modifier did not provide sufficient detail for the purposes of our reporting objectives. For more information, see Medicare Learning Network Matters Number 8181.

<sup>4</sup>The fully transitioned 100 percent CBP-adjusted payment rates will include information from competitive bidding information from the round 2 recompetes. The 2016 unadjusted fee schedule rates that would have otherwise been in effect are the same as the 2015 fee schedule rates, multiplied by the annual update factor for 2016 (0.996).

<sup>5</sup>Wheelchair accessory HCPCS codes may have multiple unadjusted fee schedule payment rates, depending on the state where the beneficiary receiving the item resides; whether it was provided new, used, or rented; and whether it was provided with a wheelchair that was included in CBP round 1. For example, accessories furnished with a wheelchair bid in round 1 had an effective payment decrease of 14.5 percent in 2009 due to the 9.5 percent reduction required by The Medicare Improvements for Patients and Providers Act of 2008 combined with an exclusion from a 5 percent payment rate increase that would have otherwise taken effect in 2009. Additionally, if an accessory was included in a CBP round that operated in 10 or more areas—which was not the case for many accessories most commonly used with CRT power group 3 wheelchairs, such as power seating systems—it may have multiple CBP-adjusted rates that can vary by both state and urban vs. rural areas with each state (with the decreases in rural areas being smaller). The competitive bidding information used to adjust rates did not vary based on whether the wheelchair was included in CBP round 1; therefore, the 100 percent CBP-adjusted rates will remove the historic difference in fee schedule payment rates depending on the CBP history of the wheelchair with which an accessory was used. As a consequence, the transition to CBP-adjusted rates will lead to larger percentage decreases for accessories when they are used with wheelchairs not included in CBP round 1—such as most CRT and standard manual wheelchairs—than when the same accessories are used with CBP round 1 wheelchairs—such as most CRT and standard power wheelchairs.

We assessed the reliability of the Medicare claims and fee schedule data by reviewing relevant documentation and interviewing CMS officials and other stakeholders. We determined that these data were sufficiently reliable for the purposes of this report.

We conducted this performance audit from February 2016 through June 2016 in accordance with generally accepted government auditing standards. Those standards require that we plan and perform the audit to obtain sufficient, appropriate evidence to provide a reasonable basis for our findings based on our audit objectives. We believe that the evidence obtained provides a reasonable basis for our findings based on our audit objectives.

Enclosure IV: Medicare-Covered Wheelchairs and the Extent to Which They Were Included in the Competitive Bidding Program, by Type

**Table 4: Medicare-Covered Wheelchairs and the Extent to Which They Were Included in the Competitive Bidding Program (CBP), by Type**

	HCPCS code	Description	CBP round				
			R1	R1R	R2	R1RC	R2RC
<b>CRT, power group 3 or higher</b>	K0848	Power wheelchair, group 3 standard, sling/solid seat/back, patient weight capacity up to and including 300 pounds	Yes	--	--	--	--
	K0849	Power wheelchair, group 3 standard, captains chair, patient weight capacity up to and including 300 pounds	Yes	--	--	--	--
	K0850	Power wheelchair, group 3 heavy duty, sling/solid seat/back, patient weight capacity 301 to 450 pounds	Yes	--	--	--	--
	K0851	Power wheelchair, group 3 heavy duty, captains chair, patient weight capacity 301 to 450 pounds	Yes	--	--	--	--
	K0852	Power wheelchair, group 3 very heavy duty, sling/solid seat/back, patient weight capacity 451 to 600 pounds	Yes	--	--	--	--
	K0853	Power wheelchair, group 3 very heavy duty, captains chair, patient weight capacity 451 to 600 pounds	Yes	--	--	--	--
	K0854	Power wheelchair, group 3 extra heavy duty, sling/solid seat/back, patient weight capacity 601 pounds or more	Yes	--	--	--	--
	K0855	Power wheelchair, group 3 extra heavy duty, captains chair, patient weight capacity 601 pounds or more	Yes	--	--	--	--
	K0856	Power wheelchair, group 3 standard, single power option, sling/solid seat/back, patient weight capacity up to and including 300 pounds	Yes	--	--	--	--
	K0857	Power wheelchair, group 3 standard, single power option, captains chair, patient weight capacity up to and including 300 pounds	Yes	--	--	--	--
	K0858	Power wheelchair, group 3 heavy duty, single power option, sling/solid seat/back, patient weight 301 to 450 pounds	Yes	--	--	--	--
	K0859	Power wheelchair, group 3 heavy duty, single power option, captains chair, patient weight capacity 301 to 450 pounds	Yes	--	--	--	--
	K0860	Power wheelchair, group 3 very heavy duty, single power option, sling/solid seat/back, patient weight capacity 451 to 600 pounds	Yes	--	--	--	--
	K0861	Power wheelchair, group 3 standard, multiple power option, sling/solid seat/back, patient weight capacity up to and including 300 pounds	Yes	--	--	--	--
	K0862	Power wheelchair, group 3 heavy duty, multiple power option, sling/solid seat/back, patient weight capacity 301 to 450 pounds	Yes	--	--	--	--
	K0863	Power wheelchair, group 3 very heavy duty, multiple power option, sling/solid seat/back, patient weight capacity 451 to 600 pounds	Yes	--	--	--	--
	K0864	Power wheelchair, group 3 extra heavy duty, multiple power option, sling/solid seat/back, patient weight capacity 601 pounds or more	Yes	--	--	--	--
	K0890	Power wheelchair, group 5 pediatric, single power option, sling/solid seat/back, patient weight capacity up to and including 125 pounds	--	--	--	--	--
	K0891	Power wheelchair, group 5 pediatric, multiple power option, sling/solid seat/back, patient weight capacity up to and including 125 pounds	--	--	--	--	--



**Table 4: Medicare-Covered Wheelchairs and the Extent to Which They Were Included in the Competitive Bidding Program (CBP), by Type (cont.)**

	HCPCS code	Description	CBP round				
			R1	R1R	R2	R1RC	R2RC
<b>CRT, power, other</b>	E0986	Manual wheelchair accessory, push-rim activated power assist system	--	--	--	--	--
	E1239	Power wheelchair, pediatric size, not otherwise specified	--	--	--	--	--
	K0013	Custom motorized/power wheelchair base	--	--	--	--	--
	K0812	Power operated vehicle, not otherwise classified	--	--	--	--	--
	K0835	Power wheelchair, group 2 standard, single power option, sling/solid seat/back, patient weight capacity up to and including 300 pounds	Yes	Yes	--	--	--
	K0836	Power wheelchair, group 2 standard, single power option, captains chair, patient weight capacity up to and including 300 pounds	Yes	Yes	--	--	--
	K0837	Power wheelchair, group 2 heavy duty, single power option, sling/solid seat/back, patient weight capacity 301 to 450 pounds	Yes	Yes	--	--	--
	K0838	Power wheelchair, group 2 heavy duty, single power option, captains chair, patient weight capacity 301 to 450 pounds	Yes	Yes	--	--	--
	K0839	Power wheelchair, group 2 very heavy duty, single power option sling/solid seat/back, patient weight capacity 451 to 600 pounds	Yes	Yes	--	--	--
	K0840	Power wheelchair, group 2 extra heavy duty, single power option, sling/solid seat/back, patient weight capacity 601 pounds or more	Yes	Yes	--	--	--
	K0841	Power wheelchair, group 2 standard, multiple power option, sling/solid seat/back, patient weight capacity up to and including 300 pounds	Yes	Yes	--	--	--
	K0842	Power wheelchair, group 2 standard, multiple power option, captains chair, patient weight capacity up to and including 300 pounds	Yes	Yes	--	--	--
	K0843	Power wheelchair, group 2 heavy duty, multiple power option, sling/solid seat/back, patient weight capacity 301 to 450 pounds	Yes	Yes	--	--	--
	K0898	Power wheelchair, not otherwise classified	--	--	--	--	--
	<b>CRT, manual</b>	E1161	Manual adult size wheelchair, includes tilt in space	--	--	--	--
E1229		Wheelchair, pediatric size, not otherwise specified	--	--	--	--	--
E1231		Wheelchair, pediatric size, tilt-in-space, rigid, adjustable, with seating system	--	--	--	--	--
E1232		Wheelchair, pediatric size, tilt-in-space, folding, adjustable, with seating system	--	--	--	--	--
E1233		Wheelchair, pediatric size, tilt-in-space, rigid, adjustable, without seating system	--	--	--	--	--
E1234		Wheelchair, pediatric size, tilt-in-space, folding, adjustable, without seating system	--	--	--	--	--
E1235		Wheelchair, pediatric size, rigid, adjustable, with seating system	--	--	--	--	--
E1236		Wheelchair, pediatric size, folding, adjustable, with seating system	--	--	--	--	--
K0005		Ultralightweight wheelchair	--	--	--	--	--
K0008		Custom manual wheelchair/base	--	--	--	--	--
K0009	Other manual wheelchair/base	--	--	--	--	--	

**Table 4: Medicare-Covered Wheelchairs and the Extent to Which They Were Included in the Competitive Bidding Program (CBP), by Type (cont.)**

	HCPCS code	Description	CBP round				
			R1	R1R	R2	R1RC	R2RC
<b>Standard, power</b>	K0800	Power operated vehicle, group 1 standard, patient weight capacity up to and including 300 pounds	Yes	Yes	Yes	Yes	Yes
	K0801	Power operated vehicle, group 1 heavy duty, patient weight capacity 301 to 450 pounds	Yes	Yes	Yes	Yes	Yes
	K0802	Power operated vehicle, group 1 very heavy duty, patient weight capacity 451 to 600 pounds	Yes	Yes	Yes	Yes	Yes
	K0813	Power wheelchair, group 1 standard, portable, sling/solid seat and back, patient weight capacity up to and including 300 pounds	Yes	Yes	Yes	Yes	Yes
	K0814	Power wheelchair, group 1 standard, portable, captains chair, patient weight capacity up to and including 300 pounds	Yes	Yes	Yes	Yes	Yes
	K0815	Power wheelchair, group 1 standard, sling/solid seat and back, patient weight capacity up to and including 300 pounds	Yes	Yes	Yes	Yes	Yes
	K0816	Power wheelchair, group 1 standard, captains chair, patient weight capacity up to and including 300 pounds	Yes	Yes	Yes	Yes	Yes
	K0820	Power wheelchair, group 2 standard, portable, sling/solid seat/back, patient weight capacity up to and including 300 pounds	Yes	Yes	Yes	Yes	Yes
	K0821	Power wheelchair, group 2 standard, portable, captains chair, patient weight capacity up to and including 300 pounds	Yes	Yes	Yes	Yes	Yes
	K0822	Power wheelchair, group 2 standard, sling/solid seat/back, patient weight capacity up to and including 300 pounds	Yes	Yes	Yes	Yes	Yes
	K0823	Power wheelchair, group 2 standard, captains chair, patient weight capacity up to and including 300 pounds	Yes	Yes	Yes	Yes	Yes
	K0824	Power wheelchair, group 2 heavy duty, sling/solid seat/back, patient weight capacity 301 to 450 pounds	Yes	Yes	Yes	Yes	Yes
	K0825	Power wheelchair, group 2 heavy duty, captains chair, patient weight capacity 301 to 450 pounds	Yes	Yes	Yes	Yes	Yes
	K0826	Power wheelchair, group 2 very heavy duty, sling/solid seat/back, patient weight capacity 451 to 600 pounds	Yes	Yes	Yes	Yes	Yes
	K0827	Power wheelchair, group 2 very heavy duty, captains chair, patient weight capacity 451 to 600 pounds	Yes	Yes	Yes	Yes	Yes
	K0828	Power wheelchair, group 2 extra heavy duty, sling/solid seat/back, patient weight capacity 601 pounds or more	Yes	Yes	Yes	Yes	Yes
	K0829	Power wheelchair, group 2 extra heavy duty, captains chair, patient weight 601 pounds or more	Yes	Yes	Yes	Yes	Yes

**Table 4: Medicare-Covered Wheelchairs and the Extent to Which They Were Included in the Competitive Bidding Program (CBP), by Type (cont.)**

	HCPCS code	Description	CBP round				
			R1	R1R	R2	R1RC	R2RC
<b>Standard, manual</b>	E1031	Rollabout chairs	--	--			
	E1037	Transport chair, pediatric size	--	--	--	Yes	Yes
	E1038	Transport chair, adult size, patient weight capacity up to and including 300 pounds	--	--	Yes	Yes	Yes
	E1039	Transport chair, adult size, heavy duty, patient weight capacity greater than 300 pounds	--	--	--	Yes	Yes
	E1237	Wheelchair, pediatric size, rigid, adjustable, without seating system	--	--	--	--	--
	E1238	Wheelchair, pediatric size, folding, adjustable, without seating system	--	--	--	--	--
	K0001	Standard wheelchair	--	--		Yes	Yes
	K0002	Standard hemi (low seat) wheelchair	--	--		Yes	Yes
	K0003	Lightweight wheelchair	--	--		Yes	Yes
	K0004	High strength, lightweight wheelchair	--	--		Yes	Yes
	K0006	Heavy duty wheelchair	--	--		Yes	Yes
	K0007	Extra heavy duty wheelchair	--	--		Yes	Yes

Source: GAO analysis of Centers for Medicare & Medicaid Services data. | GAO-16-640R

Legend: HCPCS = Health Care Common Procedure Coding System. R1 = round 1 (July 1 to July 15, 2008). R1R = round 1 rebid (January 1, 2011, to December 31, 2013). R2 = round 2 (July 1, 2013, to June 30, 2016). R1RC = round 1 recompetete (January 1, 2014, to December 31, 2016). R2 = round 2 recompetete (July 1, 2016, to December 31, 2018). CRT = complex rehabilitative technology.

Note: The list of Medicare-covered wheelchairs was based on a review of Local Coverage Determinations and feedback from CMS. Custom and not otherwise specified wheelchairs were classified as complex rehabilitative wheelchairs because they may meet the definition in Appendix B of CMS’s Durable Medicare Equipment Quality Standards (ICN 905709); similarly, a push-rim activated power assist devices (E0986) was counted as complex wheelchair because the provision of this accessory may allow an otherwise standard manual wheelchair to accommodate rehabilitative features. The standard power and manual wheelchair categories include non-wheelchair mobility devices with which wheelchair accessories may be used. The table includes all Medicare-covered wheelchairs, regardless of whether any were provided during 2014. All wheelchairs were included in at least one CBP round, except for pediatric wheelchairs (of any type), the push-rim activated power assist device, custom and not otherwise specified chairs, and complex manual wheelchairs.

Enclosure V: Medicare-Covered Wheelchair Accessories and the Extent to Which They Were Included in the Competitive Bidding Program, by Category

**Table 5: Medicare-Covered Wheelchair Accessories and the Extent to Which They Were Included in the Competitive Bidding Program (CBP), by Category**

	HCPC S code	Description	CBP Rounds				
			R1	R1R	R2	R1RC	R2RC
<b>Power seating systems</b>	E1002	Wheelchair accessory, power seating system, tilt only	Yes	Yes	--	--	--
	E1003	Wheelchair accessory, power seating system, recline only, without shear reduction	Yes	Yes	--	--	--
	E1004	Wheelchair accessory, power seating system, recline only, with mechanical shear reduction	Yes	Yes	--	--	--
	E1005	Wheelchair accessory, power seating system, recline only, with power shear reduction	Yes	Yes	--	--	--
	E1006	Wheelchair accessory, power seating system, combination tilt and recline, without shear reduction	Yes	Yes	--	--	--
	E1007	Wheelchair accessory, power seating system, combination tilt and recline, with mechanical shear reduction	Yes	Yes	--	--	--
	E1008	Wheelchair accessory, power seating system, combination tilt and recline, with power shear reduction	Yes	Yes	--	--	--
	E1009	Wheelchair accessory, addition to power seating system, mechanically linked leg elevation system, including pushrod and leg rest, each	--	--	--	--	--
	E1010	Wheelchair accessory, addition to power seating system, power leg elevation system, including leg rest, pair	Yes	Yes	--	--	--
	E2300	Wheelchair accessory, power seat elevation system, any type	--	--	--	--	--
<b>Power wheelchair drive control systems</b>	E2310	Power wheelchair accessory, electronic connection between wheelchair controller and one power seating system motor, including all related electronics	Yes	Yes	--	--	--
	E2311	Power wheelchair accessory, electronic connection between wheelchair controller and two or more power seating system motors, including all related electronics	Yes	Yes	--	--	--
	E2312	Power wheelchair accessory, hand or chin control interface, mini-proportional remote joystick, proportional, including fixed mounting hardware	--	--	--	--	--
	E2313	Power wheelchair accessory, harness for upgrade to expandable controller, including all fasteners, connectors, and mounting hardware, each	--	--	--	--	--
	E2321	Power wheelchair accessory, hand control interface, remote joystick, nonproportional, including all related electronics, mechanical stop switch, and fixed mounting hardware	Yes	Yes	--	--	--
	E2322	Power wheelchair accessory, hand control interface, multiple mechanical switches, nonproportional, including all related electronics, mechanical stop switch, and fixed mounting hardware	Yes	Yes	--	--	--
	E2323	Power wheelchair accessory, specialty joystick handle for hand control interface, prefabricated	Yes	Yes	--	--	--
	E2324	Power wheelchair accessory, chin cup for chin control interface	Yes	Yes	--	--	--
	E2325	Power wheelchair accessory, sip and puff interface, nonproportional, including all related electronics, mechanical stop switch, and manual swingaway mounting hardware	Yes	Yes	--	--	--
	E2326	Power wheelchair accessory, breath tube kit for sip and puff interface	Yes	Yes	--	--	--
	E2327	Power wheelchair accessory, head control interface, mechanical, proportional, including all related electronics, mechanical direction change switch, and fixed mounting hardware	Yes	Yes	--	--	--

**Table 5: Medicare-Covered Wheelchair Accessories and the Extent to Which They Were Included in the Competitive Bidding Program (CBP), by Category (cont.)**

	HCPCS code	Description	CBP rounds				
			R1	R1R	R2	R1RC	R2RC
<b>Power wheelchair drive control systems (cont.)</b>	E2328	Power wheelchair accessory, head control or extremity control interface, electronic, proportional, including all related electronics and fixed mounting hardware	Yes	Yes	--	--	--
	E2329	Power wheelchair accessory, head control interface, contact switch mechanism, nonproportional, including all related electronics, mechanical stop switch, mechanical direction change switch, head array, and fixed mounting hardware	Yes	Yes	--	--	--
	E2330	Power wheelchair accessory, head control interface, proximity switch mechanism, nonproportional, including all related electronics, mechanical stop switch, mechanical direction change switch, head array, and fixed mounting hardware	Yes	Yes	--	--	--
	E2331	Power wheelchair accessory, attendant control, proportional, including all related electronics and fixed mounting hardware	--	--	--	--	--
	E2373	Power wheelchair accessory, hand or chin control interface, compact remote joystick, proportional, including fixed mounting hardware	Yes	Yes	--	--	--
	E2374	Power wheelchair accessory, hand or chin control interface, standard remote joystick (not including controller), proportional, including all related electronics and fixed mounting hardware, replacement only	Yes	Yes	--	--	--
	E2375	Power wheelchair accessory, non-expandable controller, including all related electronics and mounting hardware, replacement only	Yes	Yes	--	Yes	Yes
	E2376	Power wheelchair accessory, expandable controller, including all related electronics and mounting hardware, replacement only	Yes	Yes	--	--	--
	E2377	Power wheelchair accessory, expandable controller, including all related electronics and mounting hardware, upgrade provided at initial issue	Yes	Yes	--	--	--
<b>Other power wheelchair accessories</b>	E1016	Shock absorber for power wheelchair, each	Yes	Yes	Yes	Yes	Yes
	E1018	Heavy duty shock absorber for heavy duty or extra heavy duty power wheelchair, each	--	--	--	--	--
	E2351	Power wheelchair accessory, electronic interface to operate speech generating device using power wheelchair control interface	Yes	Yes	--	--	--
	E2368	Power wheelchair component, drive wheel motor, replacement only	Yes	Yes	Yes	Yes	Yes
	E2369	Power wheelchair component, drive wheel gear box, replacement only	Yes	Yes	Yes	Yes	Yes
	E2370	Power wheelchair component, integrated drive wheel motor and gear box combination, replacement only	Yes	Yes	Yes	Yes	Yes
	E2378	Power wheelchair component, actuator,	--	--	--	--	Yes

HCPCS code	Description	CBP rounds				
		R1	R1R	R2	R1RC	R2RC
	replacement only					
E2381	Power wheelchair accessory, pneumatic drive wheel tire, any size, replacement only, each	Yes	Yes	Yes	Yes	Yes
E2382	Power wheelchair accessory, tube for pneumatic drive wheel tire, any size, replacement only, each	Yes	Yes	--	--	--
E2383	Power wheelchair accessory, insert for pneumatic drive wheel tire (removable), any type, any size, replacement only, each	Yes	Yes	Yes	Yes	Yes
E2384	Power wheelchair accessory, pneumatic caster tire, any size, replacement only, each	Yes	Yes	Yes	Yes	Yes
E2385	Power wheelchair accessory, tube for pneumatic caster tire, any size, replacement only, each	Yes	Yes	--	--	--
E2386	Power wheelchair accessory, foam filled drive wheel tire, any size, replacement only, each	Yes	Yes	Yes	Yes	Yes
E2387	Power wheelchair accessory, foam filled caster tire, any size, replacement only, each	Yes	Yes	Yes	Yes	Yes

**Table 5: Medicare-Covered Wheelchair Accessories and the Extent to Which They Were Included in the Competitive Bidding Program (CBP), by Category (cont.)**

	HCPCS code	Description	CBP rounds				
			R1	R1R	R2	R1RC	R2RC
<b>Other power wheelchair accessories (cont.)</b>	E2388	Power wheelchair accessory, foam drive wheel tire, any size, replacement only, each	Yes	Yes	--	--	--
	E2389	Power wheelchair accessory, foam caster tire, any size, replacement only, each	Yes	Yes	--	--	--
	E2390	Power wheelchair accessory, solid (rubber/plastic) drive wheel tire, any size, replacement only, each	Yes	Yes	--	--	--
	E2391	Power wheelchair accessory, solid (rubber/plastic) caster tire (removable), any size, replacement only, each	Yes	Yes	Yes	Yes	Yes
	E2392	Power wheelchair accessory, solid (rubber/plastic) caster tire with integrated wheel, any size, replacement only, each	Yes	Yes	Yes	Yes	Yes
	E2394	Power wheelchair accessory, drive wheel excludes tire, any size, replacement only, each	Yes	Yes	Yes	Yes	Yes
	E2395	Power wheelchair accessory, caster wheel excludes tire, any size, replacement only, each	Yes	Yes	Yes	Yes	Yes
	E2396	Power wheelchair accessory, caster fork, any size, replacement only, each	Yes	Yes	Yes	Yes	Yes
	K0098	Drive belt for power wheelchair	Yes	Yes	--	Yes	Yes
	<b>Positioning accessories</b>	E0955	Wheelchair accessory, headrest, cushioned, any type, including fixed mounting hardware, each	Yes	Yes	Yes	Yes
E0956		Wheelchair accessory, lateral trunk or hip support, any type, including fixed mounting hardware, each	Yes	Yes	Yes	Yes	Yes
E0957		Wheelchair accessory, medial thigh support, any type, including fixed mounting hardware, each	Yes	Yes	Yes	Yes	Yes
E0960		Wheelchair accessory, shoulder harness/straps or chest strap, including any type mounting hardware	Yes	Yes	Yes	Yes	Yes
E0966		Manual wheelchair accessory, headrest extension, each	--	--	--	Yes	Yes
E1028		Wheelchair accessory, manual swingaway, retractable or removable mounting hardware for joystick, other control interface or positioning accessory	Yes	Yes	Yes	Yes	Yes
<b>Batteries / chargers</b>		E2359	Power wheelchair accessory, group 34 sealed lead acid battery, each (e.g. gel cell, absorbed glassmat)	--	--	--	Yes
	E2361	Power wheelchair accessory, 22nf sealed lead acid battery, each, (e.g. gel cell, absorbed glassmat)	Yes	Yes	Yes	Yes	Yes
	E2363	Power wheelchair accessory, group 24 sealed lead acid battery, each (e.g. gel cell, absorbed glassmat)	Yes	Yes	Yes	Yes	Yes
	E2365	Power wheelchair accessory, u-1 sealed lead acid battery, each (e.g. gel cell, absorbed glassmat)	Yes	Yes	Yes	Yes	Yes
	E2366	Power wheelchair accessory, battery charger, single mode, for use with only one battery type, sealed or non-sealed, each	Yes	Yes	Yes	Yes	Yes
	E2367	Power wheelchair accessory, battery charger, dual mode, for use with either battery type, sealed or non-sealed, each	Yes	Yes	Yes	--	--
	E2371	Power wheelchair accessory, group 27 sealed lead acid battery, (e.g. gel cell, absorbed glassmat), each	Yes	Yes	Yes	Yes	Yes
	E2397	Power wheelchair accessory, lithium-based battery, each	--	--	--	Yes	Yes
	K0733	Power wheelchair accessory, 12 to 24 amp hour sealed lead acid battery, each (e.g., gel cell, absorbed glassmat)	Yes	Yes	--	Yes	Yes

**Table 5: Medicare-Covered Wheelchair Accessories and the Extent to Which They Were Included in the Competitive Bidding Program (CBP), by Category (cont.)**

	HCPCS code	Description	CBP rounds				
			R1	R1R	R2	R1RC	R2RC
<b>Seat cushions</b>	E2601	General use wheelchair seat cushion, width less than 22 inches, any depth	Yes	Yes	Yes	Yes	Yes
	E2602	General use wheelchair seat cushion, width 22 inches or greater, any depth	Yes	Yes	Yes	Yes	Yes
	E2603	Skin protection wheelchair seat cushion, width less than 22 inches, any depth	Yes	Yes	Yes	Yes	Yes
	E2604	Skin protection wheelchair seat cushion, width 22 inches or greater, any depth	Yes	Yes	Yes	Yes	Yes
	E2605	Positioning wheelchair seat cushion, width less than 22 inches, any depth	Yes	Yes	Yes	Yes	Yes
	E2606	Positioning wheelchair seat cushion, width 22 inches or greater, any depth	Yes	Yes	Yes	Yes	Yes
	E2607	Skin protection and positioning wheelchair seat cushion, width less than 22 inches, any depth	Yes	Yes	Yes	Yes	Yes
	E2608	Skin protection and positioning wheelchair seat cushion, width 22 inches or greater, any depth	Yes	Yes	Yes	Yes	Yes
	E2609	Custom fabricated wheelchair seat cushion, any size	--	--	--	--	--
	E2622	Skin protection wheelchair seat cushion, adjustable, width less than 22 inches, any depth	--	Yes	--	--	--
	E2623	Skin protection wheelchair seat cushion, adjustable, width 22 inches or greater, any depth	--	Yes	--	--	--
	E2624	Skin protection and positioning wheelchair seat cushion, adjustable, width less than 22 inches, any depth	--	Yes	--	--	--
	E2625	Skin protection and positioning wheelchair seat cushion, adjustable, width 22 inches, or greater, any depth	--	Yes	--	--	--
	<b>Back cushions</b>	E2611	General use wheelchair back cushion, width less than 22 inches, any height, including any type mounting hardware	Yes	Yes	Yes	Yes
E2612		General use wheelchair back cushion, width 22 inches or greater, any height, including any type mounting hardware	Yes	Yes	Yes	Yes	Yes
E2613		Positioning wheelchair back cushion, posterior, width less than 22 inches, any height, including any type mounting hardware	Yes	Yes	Yes	Yes	Yes
E2614		Positioning wheelchair back cushion, posterior, width 22 inches or greater, any height, including any type mounting hardware	Yes	Yes	Yes	Yes	Yes
E2615		Positioning wheelchair back cushion, posterior-lateral, width less than 22 inches, any height, including any type mounting hardware	Yes	Yes	Yes	Yes	Yes
E2616		Positioning wheelchair back cushion, posterior-lateral, width 22 inches or greater, any height, including any type mounting hardware	Yes	Yes	Yes	Yes	Yes
E2617		Custom fabricated wheelchair back cushion, any size, including any type mounting hardware	--	--	--	--	--
E2620		Positioning wheelchair back cushion, planar back with lateral supports, width less than 22 inches, any height, including any type mounting hardware	Yes	Yes	Yes	Yes	Yes
E2621		Positioning wheelchair back cushion, planar back with lateral supports, width 22 inches or greater, any height, including any type mounting hardware	Yes	Yes	Yes	Yes	Yes



**Table 5: Medicare-Covered Wheelchair Accessories and the Extent to Which They Were Included in the Competitive Bidding Program (CBP), by Category (cont.)**

	HCPCS code	Description	CBP rounds				
			R1	R1R	R2	R1RC	R2RC
<b>Arm of chair</b>	E0973	Wheelchair accessory, adjustable height, detachable armrest, complete assembly, each	Yes	Yes	Yes	Yes	Yes
	E2209	Wheelchair accessory, arm trough, with or without hand support, each	Yes	Yes	Yes	Yes	Yes
	E2626	Wheelchair accessory, shoulder elbow, mobile arm support attached to wheelchair, balanced, adjustable	--	--	--	Yes	Yes
	E2627	Wheelchair accessory, shoulder elbow, mobile arm support attached to wheelchair, balanced, adjustable rancho type	--	--	--	Yes	Yes
	E2628	Wheelchair accessory, shoulder elbow, mobile arm support attached to wheelchair, balanced, reclining	--	--	--	Yes	Yes
	E2629	Wheelchair accessory, shoulder elbow, mobile arm support attached to wheelchair, balanced, friction arm support (friction dampening to proximal and distal joints)	--	--	--	Yes	Yes
	E2630	Wheelchair accessory, shoulder elbow, mobile arm support, monosuspension arm and hand support, overhead elbow forearm hand sling support, yoke type suspension support	--	--	--	Yes	Yes
	E2631	Wheelchair accessory, addition to mobile arm support, elevating proximal arm	--	--	--	Yes	Yes
	E2632	Wheelchair accessory, addition to mobile arm support, offset or lateral rocker arm with elastic balance control	--	--	--	Yes	Yes
	E2633	Wheelchair accessory, addition to mobile arm support, supinator	--	--	--	Yes	Yes
	K0015	Detachable, non-adjustable height armrest, each	Yes	Yes	Yes	Yes	Yes
	K0017	Detachable, adjustable height armrest, base, each	Yes	Yes	--	--	--
	K0018	Detachable, adjustable height armrest, upper portion, each	Yes	Yes	--	--	--
	K0019	Arm pad, each	Yes	Yes	Yes	Yes	Yes
	K0020	Fixed, adjustable height armrest, pair	Yes	Yes	--	--	--
<b>Footrest / legrest</b>	E0951	Heel loop/holder, any type, with or without ankle strap, each	Yes	Yes	Yes	Yes	Yes
	E0952	Toe loop/holder, any type, each	Yes	Yes	--	--	--
	E0990	Wheelchair accessory, elevating leg rest, complete assembly, each	Yes	Yes	Yes	Yes	Yes
	E0995	Wheelchair accessory, calf rest/pad, each	Yes	Yes	--	--	--
	E1020	Residual limb support system for wheelchair, any type	Yes	Yes	Yes	Yes	Yes
	K0037	High mount flip-up footrest, each	Yes	Yes	--	--	--
	K0038	Leg strap, each	Yes	Yes	--	--	--
	K0039	Leg strap, h style, each	Yes	Yes	--	--	--
	K0040	Adjustable angle footplate, each	Yes	Yes	Yes	Yes	Yes
	K0041	Large size footplate, each	Yes	Yes	--	--	--
			Yes	Yes			

HCPCS code	Description	CBP rounds				
		R1	R1R	R2	R1RC	R2RC
K0042	Standard size footplate, each	Yes	Yes	--	--	--
K0043	Footrest, lower extension tube, each	Yes	Yes	--	--	--
K0044	Footrest, upper hanger bracket, each	Yes	Yes	--	--	--
K0045	Footrest, complete assembly	Yes	Yes	--	--	--
K0046	Elevating legrest, lower extension tube, each	Yes	Yes	--	--	--
K0047	Elevating legrest, upper hanger bracket, each	Yes	Yes	--	--	--

**Table 5: Medicare-Covered Wheelchair Accessories and the Extent to Which They Were Included in the Competitive Bidding Program (CBP), by Category (cont.)**

	HCPCS code	Description	CBP rounds				
			R1	R1R	R2	R1RC	R2RC
<b>Footrest / legrest (cont.)</b>	K0050	Ratchet assembly	Yes	Yes	--	--	--
	K0051	Cam release assembly, footrest or legrest, each	Yes	Yes	--	--	--
	K0052	Swingaway, detachable footrests, each	Yes	Yes	Yes	Yes	Yes
	K0053	Elevating footrests, articulating (telescoping), each	Yes	Yes	Yes	Yes	Yes
	K0195	Elevating leg rests, pair (for use with capped rental wheelchair base)	Yes	--	Yes	Yes	Yes
<b>Nonstandard seat frame dimensions</b>	E1011	Modification to pediatric size wheelchair, width adjustment package (not to be dispensed with initial chair)	--	--	--	--	--
	E2201	Manual wheelchair accessory, nonstandard seat frame, width greater than or equal to 20 inches and less than 24"	--	--	Yes	Yes	Yes
	E2202	Manual wheelchair accessory, nonstandard seat frame width, 24-27 inches	--	--	Yes	Yes	Yes
	E2203	Manual wheelchair accessory, nonstandard seat frame depth, 20 to less than 22 inches	--	--	Yes	Yes	Yes
	E2204	Manual wheelchair accessory, nonstandard seat frame depth, 22 to 25 inches	--	--	Yes	Yes	Yes
	K0056	Seat height less than 17" or equal to or greater than 21" for a high strength, lightweight, or ultralightweight wheelchair	--	--	Yes	Yes	Yes
<b>Rear wheels for manual wheelchairs</b>	E0961	Manual wheelchair accessory, wheel lock brake extension (handle), each	--	--	Yes	Yes	Yes
	E0967	Manual wheelchair accessory, hand rim with projections, any type, each	--	--	--	Yes	Yes
	E0988	Manual wheelchair accessory, lever-activated, wheel drive, pair	--	--	--	--	--
	E2205	Manual wheelchair accessory, handrim without projections (includes ergonomic or contoured), any type, replacement only, each	--	--	--	Yes	Yes
	E2206	Manual wheelchair accessory, wheel lock assembly, complete, each	--	--	Yes	Yes	Yes

HCPC S code	Description	CBP rounds				
		R1	R1R	R2	R1RC	R2RC
E2211	Manual wheelchair accessory, pneumatic propulsion tire, any size, each	--	--	Yes	Yes	Yes
E2212	Manual wheelchair accessory, tube for pneumatic propulsion tire, any size, each	--	--	--	Yes	Yes
E2213	Manual wheelchair accessory, insert for pneumatic propulsion tire (removable), any type, any size, each	--	--	Yes	Yes	Yes
E2214	Manual wheelchair accessory, pneumatic caster tire, any size, each	--	--	--	Yes	Yes
E2215	Manual wheelchair accessory, tube for pneumatic caster tire, any size, each	--	--	--	Yes	Yes
E2216	Manual wheelchair accessory, foam filled propulsion tire, any size, each	--	--	--	--	--
E2217	Manual wheelchair accessory, foam filled caster tire, any size, each	--	--	--	--	--
E2218	Manual wheelchair accessory, foam propulsion tire, any size, each	--	--	--	--	--
E2219	Manual wheelchair accessory, foam caster tire, any size, each	--	--	--	Yes	Yes
E2220	Manual wheelchair accessory, solid (rubber/plastic) propulsion tire, any size, each	--	--	--	Yes	Yes
E2221	Manual wheelchair accessory, solid (rubber/plastic) caster tire (removable), any size, each	--	--	--	Yes	Yes
E2222	Manual wheelchair accessory, solid (rubber/plastic) caster tire with integrated wheel, any size, each	--	--	--	Yes	Yes

**Table 5: Medicare-Covered Wheelchair Accessories and the Extent to Which They Were Included in the Competitive Bidding Program (CBP), by Category (cont.)**

	HCPCS code	Description	CBP rounds				
			R1	R1R	R2	R1RC	R2RC
<b>Rear wheels for manual wheelchairs (cont.)</b>	E2224	Manual wheelchair accessory, propulsion wheel excludes tire, any size, each	--	--	--	Yes	Yes
	E2225	Manual wheelchair accessory, caster wheel excludes tire, any size, replacement only, each	--	--	--	Yes	Yes
	E2226	Manual wheelchair accessory, caster fork, any size, replacement only, each	--	--	--	Yes	Yes
	E2227	Manual wheelchair accessory, gear reduction drive wheel, each	--	--	--	--	--
	E2228	Manual wheelchair accessory, wheel braking system and lock, complete, each	--	--	--	Yes	Yes
	K0065	Spoke protectors, each	--	--	--	Yes	Yes
	K0069	Rear wheel assembly, complete, with solid tire, spokes or molded, each	--	--	Yes	Yes	Yes
	K0070	Rear wheel assembly, complete, with pneumatic tire, spokes or molded, each	--	--	Yes	Yes	Yes
	K0071	Front caster assembly, complete, with pneumatic tire, each	--	--	--	Yes	Yes
	K0072	Front caster assembly, complete, with semi-pneumatic tire, each	--	--	--	Yes	Yes
	K0073	Caster pin lock, each	--	--	--	Yes	Yes
	K0077	Front caster assembly, complete, with solid tire, each	--	--	Yes	Yes	Yes
<b>Miscellaneous seating accessories</b>	E0992	Manual wheelchair accessory, solid seat insert	--	--	Yes	Yes	Yes
	E2231	Manual wheelchair accessory, solid seat support base (replaces sling seat), includes any type mounting hardware	--	--	Yes	Yes	Yes
	E2291	Back, planar, for pediatric size wheelchair including fixed attaching hardware	--	--	--	--	--
	E2292	Seat, planar, for pediatric size wheelchair including fixed attaching hardware	--	--	--	--	--
	E2293	Back, contoured, for pediatric size wheelchair including fixed attaching hardware	--	--	--	--	--
	E2294	Seat, contoured, for pediatric size wheelchair including fixed attaching hardware	--	--	--	--	--
	E2619	Replacement cover for wheelchair seat cushion or back cushion, each	Yes	Yes	--	--	--
	K0669	Wheelchair accessory, wheelchair seat or back cushion, does not meet specific code criteria or no written coding verification from DME PDAC	--	--	--	--	--
<b>Miscellaneous other accessories</b>	A9900	Miscellaneous durable medical equipment supply, accessory, and/or service component of another HCPCS code	--	--	--	--	--
	E0705	Transfer device, any type, each	--	--	--	Yes	Yes
	E0950	Wheelchair accessory, tray, each	Yes	Yes	Yes	Yes	Yes
	E0958	Manual wheelchair accessory, one-arm drive attachment, each	--	--	--	Yes	Yes
	E0959	Manual wheelchair accessory, adapter for amputee, each	--	--	--	Yes	Yes
	E0971	Manual wheelchair accessory, anti-tipping device, each	--	--	Yes	Yes	Yes
						Yes	Yes

E0974	Manual wheelchair accessory, anti-rollback device, each	--	--	--			Yes	Yes
E0978	Wheelchair accessory, positioning belt/safety belt/pelvic strap, each	Yes	Yes	Yes	Yes	Yes		
E0981	Wheelchair accessory, seat upholstery, replacement only, each				--	--	--	--
E0982	Wheelchair accessory, back upholstery, replacement only, each	Yes	Yes		--	--	--	--

**Table 5: Medicare-Covered Wheelchair Accessories and the Extent to Which They Were Included in the Competitive Bidding Program (CBP), by Category (cont.)**

	HCPCS code	Description	CBP rounds					
			R1	R1R	R2	R1RC	R2RC	
<b>Miscellaneous other accessories (cont.)</b>	E0985	Wheelchair accessory, seat lift mechanism	--	--	--		Yes	Yes
	E1014	Reclining back, addition to pediatric size wheelchair	--	--	--	--	--	--
	E1015	Shock absorber for manual wheelchair, each	--	--	--		Yes	Yes
	E1017	Heavy duty shock absorber for heavy duty or extra heavy duty manual wheelchair, each	--	--	--	--	--	--
	E1029	Wheelchair accessory, ventilator tray, fixed				--	--	--
	E1030	Wheelchair accessory, ventilator tray, gimbaled	Yes	Yes		--	--	--
	E1225	Wheelchair accessory, manual semi-reclining back, (recline greater than 15 degrees, but less than 80 degrees), each	--	--		Yes	Yes	Yes
	E1226	Wheelchair accessory, manual fully reclining back, (recline greater than 80 degrees), each	--	--		Yes	Yes	Yes
	E2207	Wheelchair accessory, crutch and cane holder, each	--	--	--		Yes	Yes
	E2208	Wheelchair accessory, cylinder tank carrier, each	Yes	Yes	Yes	Yes	Yes	Yes
	E2210	Wheelchair accessory, bearings, any type, replacement only, each	Yes	Yes	Yes	Yes	Yes	Yes
	E2295	Manual wheelchair accessory, for pediatric size wheelchair, dynamic seating frame, allows coordinated movement of multiple positioning features	--	--	--	--	--	--
	K0105	IV hanger, each	--	--	--		Yes	Yes
	K0108	Wheelchair component or accessory, not otherwise specified	--	--	--	--	--	--

Source: GAO analysis of Centers for Medicare & Medicaid Services data. | GAO-16-640R

Legend: HCPCS = Health Care Common Procedure Coding System. R1 = round 1 (July 1 to July 15, 2008). R1R = round 1 rebid (January 1, 2011, to December 31, 2013). R2 = round 2 (July 1, 2013, to June 30, 2016). R1RC = round 1 recomplete (January 1, 2014, to December 31, 2016). R2 = round 2 recomplete (July 1, 2016, to December 31, 2018).

Note: The list of Medicare-covered wheelchair accessories was based on a review of Local Coverage Determinations and feedback from CMS. The table includes all Medicare-covered wheelchair accessories (including seating systems), regardless of whether any were received during 2014.

Enclosure VI: Medicare Utilization and Expenditures for Wheelchair Accessories, Overall and by Type of Wheelchair, by How Frequently Used with Complex Rehabilitative Technology Power Group 3 Wheelchairs and Associated Estimated Expenditures (2014)

**Table 6: Medicare Utilization and Expenditures for Wheelchair Accessories, Overall and by Type of Wheelchair, by How Frequently Used with Complex Rehabilitative Technology (CRT) Power Group 3 Wheelchairs and Associated Estimated Expenditures (2014)**

Accessory description	Total		Estimated percent of items						Estimated expenditures (millions)					Match rate to wheelchair
	Utilization (thousands)	Expenditures (millions)	CRT, power, group 3	CRT, power, other	CRT, manual	Standard, power	Standard, manual	CRT, power, group 3	CRT, power, other	CRT, manual	Standard, power	Standard, manual		
<b>Accessories used with group 3 &gt;=75%</b>	<b>68</b>	<b>118</b>	<b>88</b>	<b>6</b>	<b>5</b>	<b>1</b>	<b>0</b>	<b>109</b>	<b>8</b>	<b>0.4</b>	<b>0.1</b>	<b>0.1</b>	<b>--</b>	

HCPCS code	Accessory description	Total		Estimated percent of items						Estimated expenditures (millions)					Match rate to wheelchair
		Utilization (thousands)	Expenditures (millions)	CRT, power, group 3	CRT, power, other	CRT, manual	Standard, power	Standard, manual	CRT, power, group 3	CRT, power, other	CRT, manual	Standard, power	Standard, manual		
E1007	Power seating system, tilt and recline, mechanical shear reduction	7	58	97	3	0	0	0	\$56	2	0	0	0	99	
E2311	Electronic connection, between controller and two or more power seating system motors	9	20	93	6	0	0	0	19	1	0	0	0	98	
E1002	Power seating system, tilt only	5	18	77	22	0	0	0	14	4	0	0	0	97	
E1008	Power seating system, tilt and recline, power shear reduction	0.6	5	97	3	0	0	0	4	0.1	0	0	0	99	
E2377	Expandable controller	8	4	96	4	0	0	0	4	0.2	0	0	0	98	
E2313	Harness, for upgrade to expandable controller	9	3	95	4	0	0	0	3	0.1	0	0	0	95	
E1010	Power leg elevation system	2	3	91	9	0	0	0	2	0.2	0	0	0	92	

HCPCS code	Accessory description	Total		Estimated percent of items					Estimated expenditures (millions)					Match rate to wheelchair
		Utilization (thousands)	Expenditures (millions)	CRT, power, group	CRT, power, other	CRT, manual	Standard, power	Standard, manual	CRT, power, group	CRT, power, other	CRT, manual	Standard, power	Standard, manual	
E2310	Electronic connection, between controller and one power seating system motor	3	3	79	20	0	1	0	2	0.6	0	0	0	91
E0956	Support, lateral trunk or hip	20	2	78	1	19	1	1	1	0	0.4	0	0	83
E2330	Control interface, head, proximity switch	0.2	0.6	99	0	0	0	1	0.6	0	0	0	0	75
E2378	Actuator, replacement only	1	0.6	90	5	0	2	3	0.5	0	0	0	0	7
E2312	Control interface, hand or chin, mini-proportional remote joystick	0.2	0.5	80	17	0	2	1	0.4	0.1	0	0	0	75
E1004	Power seating system, recline only, mechanical shear reduction	0.1	0.3	87	11	0	0	2	0.3	0	0	0	0	87
E2328	Control interface, head or extremity	0.1	0.3	100	0	0	0	0	0.3	0	0	0	0	76
E2373	Control interface, hand or chin, compact remote joystick	0.4	0.3	89	2	0	9	0	0.3	0	0	0	0	54
E1005	Power seating system, recline only, power shear reduction	0	0.1	94	6	0	0	0	0.1	0	0	0	0	72
E2331	Control, attendant	0.1	0.1	99	0	1	0	0	0.1	0	0	0	0	67

**Table 6: Medicare Utilization and Expenditures for Wheelchair Accessories, Overall and by Type of Wheelchair, by How Frequently Used with Complex Rehabilitative Technology (CRT) Power Group 3 Wheelchairs and Associated Estimated Expenditures (2014) (cont.)**

Accessory description		Total		Estimated percent of items					Estimated expenditures (millions)					Match rate to wheelchair
		Utilization (thousands)	Expenditures (millions)	CRT, power, group 3	CRT, power, other	CRT, manual	Standard, power	Standard, manual	CRT, power, group 3	CRT, power, other	CRT, manual	Standard, power	Standard, manual	
<b>Accessories used with group 3 50-74%</b>		<b>172</b>	<b>32</b>	<b>64</b>	<b>4</b>	<b>12</b>	<b>19</b>	<b>2</b>	<b>\$20</b>	<b>1</b>	<b>5</b>	<b>4</b>	<b>0.5</b>	<b>--</b>
HCPCS code	Accessory description	Utilization (thousands)	Expenditures (millions)	CRT, power, group 3	CRT, power, other	CRT, manual	Standard, power	Standard, manual	CRT, power, group 3	CRT, power, other	CRT, manual	Standard, power	Standard, manual	Match rate to wheelchair
E1028	Mounting hardware for joystick, control interface, or positioning accessory	50	9	70	5	18	5	1	7	0.5	2	0.4	0.1	88
E2361	Battery, group 22NF	51	6	61	3	0	36	1	4	0.2	0	2	0	52
E2620	Back cushion, positioning, planar back with lateral supports, width <22 in.	9	5	70	2	24	1	3	3	0.1	1	0	0.1	94
E0955	Headrest	21	4	54	6	30	6	3	2	0.2	1	0.2	0.1	92
E2363	Battery, group 24	19	3	63	5	0	31	1	2	0.2	0	0.9	0	43
E2359	Battery, group 34	11	2	71	2	0	26	0	1	0	0	0.5	0	72
E2624	Seat cushion, skin protection and positioning, adjustable	4	1	59	2	29	2	7	0.8	0	0.4	0	0.1	75
E2621	Back cushion, positioning, planar back with lateral supports, width >=22 in.	0.4	0.2	73	1	25	1	1	0.1	0	0.1	0	0	98



**Table 6: Medicare Utilization and Expenditures for Wheelchair Accessories, Overall and by Type of Wheelchair, by How Frequently Used with Complex Rehabilitative Technology (CRT) Power Group 3 Wheelchairs and Associated Estimated Expenditures (2014) (cont.)**

Accessory description		Total	Estimated percent of items						Estimated expenditures (millions)					Match rate to wheelchair
		Utilization (thousands)	Expenditures (millions)	CRT, power, group 3	CRT, power, other	CRT, manual	Standard, power	Standard, manual	CRT, power, group 3	CRT, power, other	CRT, manual	Standard, power	Standard, manual	
<b>Accessories used with group 3 25-49%</b>		228	42	42	3	21	25	8	23	2	9	4	3	--
HCPCS code	Accessory description	Total Utilization (thousands)	Expenditures (millions)	CRT, power, group 3	CRT, power, other	CRT, manual	Standard, power	Standard, manual	CRT, power, group 3	CRT, power, other	CRT, manual	Standard, power	Standard, manual	Match rate to wheelchair
K0108	Wheelchair accessories, not otherwise specified	133	21	49	4	23	18	6	16	1	2	2	0.2	26
E2617	Back cushion, custom fabricated	3	4	31	1	66	0	2	1	0	2	0	0.1	73
E2622	Seat cushion, skin protection, adjustable	12	4	34	2	26	3	35	1	0.1	1	0.1	1	69
E2321	Control interface, hand, remote joystick	2	2	33	16	0	47	4	0.8	0.4	0	0.7	0.1	19
E2607	Seat cushion, skin protection and positioning	8	2	38	2	37	4	19	0.8	0	0.8	0.1	0.3	89
E2609	Seat cushion, custom fabricated	2	3	28	1	68	0	3	0.8	0	2	0	0.1	71
E2392	Tire, caster, solid, replacement only	44	2	25	2	0	71	2	0.5	0	0	1	0	16
E2376	Controller, expandable replacement only	0.9	0.9	34	0	1	60	5	0.4	0	0	0.4	0	11
E2613	Back cushion, positioning, posterior	3	1	32	2	42	2	23	0.3	0	0.5	0	0.2	92
E2615	Back cushion, positioning, posterior-lateral	3	1	26	2	59	2	11	0.3	0	0.7	0	0.1	90
E2209	Arm trough	4	0.4	41	1	15	3	40	0.2	0	0.1	0	0.1	83
E2605	Seat cushion, positioning	2	0.5	48	2	19	11	20	0.2	0	0.1	0	0.1	90
E0960	Straps, shoulder or chest	4	0.3	41	0	55	0	4	0.1	0	0.2	0	0	73

**Table 6: Medicare Utilization and Expenditures for Wheelchair Accessories, Overall and by Type of Wheelchair, by How Frequently Used with Complex Rehabilitative Technology (CRT) Power Group 3 Wheelchairs and Associated Estimated Expenditures (2014) (cont.)**

Accessory description	Total		Estimated percent of items						Estimated expenditures (millions)					Match rate to wheelchair
	Utilization (thousands)	Expenditures (millions)	CRT, power, group 3	CRT, power, other	CRT, manual	Standard, power	Standard, manual	CRT, power, group 3	CRT, power, other	CRT, manual	Standard, power	Standard, manual		
<b>Accessories used with group 3 &lt;25%</b>	<b>1,266</b>	<b>119</b>	<b>4</b>	<b>1</b>	<b>11</b>	<b>32</b>	<b>53</b>	<b>6</b>	<b>1</b>	<b>11</b>	<b>59</b>	<b>42</b>	<b>--</b>	

HCPCS code	Accessory description	Total		Estimated percent of items						Estimated expenditures (millions)					Match rate to wheelchair
		Utilization (thousands)	Expenditures (millions)	CRT, power, group 3	CRT, power, other	CRT, manual	Standard, power	Standard, manual	CRT, power, group 3	CRT, power, other	CRT, manual	Standard, power	Standard, manual		
E2370	Drive wheel motor and gear box, replacement only	32	20	7	1	0	89	3	1	0.1	0	17	0.5	15	
E2374	Control interface, hand or chin, standard remote joystick, replacement only	14	5	18	1	0	78	3	1	0.1	0	3	0.1	17	
E2386	Tire, drive wheel, foam filled, replacement only	45	5	13	1	0	83	3	0.7	0.1	0	4	0.2	15	
E0973	Armrest, adjustable height, detachable	100	8	3	0	22	24	51	0.3	0	2	2	3	88	
E2366	Battery charger, single mode	27	5	6	1	0	90	3	0.3	0	0	5	0.2	18	
E2375	Controller, non-expandable, replacement only	11	9	4	0	0	93	3	0.3	0	0	8	0.2	16	
K0040	Footplate, adjustable angle	21	2	19	1	72	1	7	0.3	0	1	0	0.1	87	
E2394	Drive wheel, replacement only	25	2	14	1	0	82	3	0.2	0	0	1	0	15	
E2603	Seat cushion, skin protection	7	0.8	19	3	9	21	48	0.2	0	0.1	0.2	0.4	83	
E2387	Tire, caster, foam filled, replacement only	17	0.8	12	1	1	82	4	0.1	0	0	0.7	0	13	
E2395	Caster wheel, replacement only	22	1	10	1	0	87	2	0.1	0	0	0.9	0	17	
E2611	Back cushion, general use	49	10	1	1	7	0	91	0.1	0.1	1	0.1	9	96	

Totals	Total		Estimated percent of items					Estimated expenditures (millions)					Match rate to wheelchair
	Utilization (thousands)	Expenditures (millions)	CRT, power, group 3	CRT, power, other	CRT, manual	Standard, power	Standard, manual	CRT, power, group 3	CRT, power, other	CRT, manual	Standard, power	Standard, manual	
<b>Subtotal 50 with highest estimated expenditures when used with CRT power G3</b>	820	256	35	2	13	34	15	157	12	19	52	17	--
<b>Total all accessories</b>	<b>1,733</b>	<b>311</b>	<b>18</b>	<b>2</b>	<b>12</b>	<b>28</b>	<b>40</b>	<b>159</b>	<b>13</b>	<b>26</b>	<b>68</b>	<b>46</b>	<b>--</b>

Source: GAO analysis of Centers for Medicare & Medicaid Services data. | GAO-16-640R

Note: Utilization is the count of all wheelchair accessories beneficiaries received or rented during 2014. Expenditures include spending by the Medicare program and by beneficiaries. The utilization and expenditures do not include accessories for which Medicare does not pay for separately—such as accessories that are part of the basic equipment package provided with a new wheelchair. The utilization and expenditures on each accessory when used with a given type of chair was estimated based on matching the accessory to the most recent chair the beneficiary received at the same time or prior to the accessory (but no earlier than January 2013), and assuming that the distribution of the items and expenditures that were not matched to a chair were the same as those that were matched. While this methodology may incorrectly match some accessories to chairs, we determined the methodology to be sufficiently reliable for our purposes. Numbers in this table were rounded; therefore zero indicates a value that rounded down to zero and the sums of columns may not equal the relevant total. Results are limited to the 50 codes with the highest estimated expenditures when used with CRT power group 3 wheelchairs.

Enclosure VII: Medicare Utilization, Expenditures, and Payment Rates for Wheelchair Accessories, by How Frequently Used with Complex Rehabilitative Technology Power Group 3 Wheelchairs and Associated Estimated Expenditures

**Table 7: Medicare Utilization, Expenditures, and Payment Rates for Wheelchair Accessories, by How Frequently Used with Complex Rehabilitative Technology (CRT) Power Group 3 Wheelchairs and Associated Estimated Expenditures**

Accessory description	2014 Utilization and Expenditures				2016 Payment Rates		
	Total		Estimated when used with CRT power group 3		Average new purchase, urban		
	Utilization (thousands)	Expenditures (millions)	Percent of items	Expenditures (millions)	Unadjusted	50/50 blended CBP-adjusted	Percentage difference
<i>Accessories used with group 3 &gt;=75%</i>	68	118	88	109	--	--	--

HCPCS code	Accessory description	2014 Utilization and Expenditures				2016 Payment Rates		
		Total		Estimated when used with CRT power group 3		Average new purchase, urban		
		Utilization (thousands)	Expenditures (millions)	Percent of items	Expenditures (millions)	Unadjusted	50/50 blended CBP-adjusted	Percentage difference
E1007	Power seating system, tilt and recline, mechanical shear reduction	7	58	97	56	8,329	7,856	-6
E2311	Electronic connection, between controller and two or more power seating system motors	9	20	93	19	2,258	2,141	-5
E1002	Power seating system, tilt only	5	18	77	14	3,862	3,645	-6
E1008	Power seating system, tilt and recline, power shear reduction	0.6	5	97	4	8,330	7,951	-5
E2377	Expandable controller	8	4	96	4	463	444	-4
E2313	Harness, for upgrade to expandable controller	9	3	95	3	348	N/A	N/A
E1010	Power leg elevation system	2	3	91	2	1,090	1,060	-3
E2310	Electronic connection, between controller and one power seating system motor	3	3	79	2	1,115	1,059	-5
E0956	Support, lateral trunk or hip	20	2	78	1	94	86	-9
E2330	Control interface, head, proximity switch	0.2	0.6	99	0.6	3,261	3,206	-2
E2378	Actuator, replacement only	1	0.6	90	0.5	566	N/A	N/A
E2312	Control interface, hand or chin, mini-proportional remote joystick	0.2	0.5	80	0.4	2,192	N/A	N/A
E1004	Power seating system, recline only,	0.1	0.3	87	0.3	4,639	4,524	-2

HCPCS code	Accessory description	2014 Utilization and Expenditures				2016 Payment Rates		
		Total		Estimated when used with CRT power group 3		Average new purchase, urban		
		Utilization (thousands)	Expenditures (millions)	Percent of items	Expenditures (millions)	Unadjusted	50/50 blended CBP-adjusted	Percentage difference
	mechanical shear reduction							
E2328	Control interface, head or extremity	0.1	0.3	100	0.3	4,722	4,634	-2
E2373	Control interface, hand or chin, compact remote joystick	0.4	0.3	89	0.3	764	N/A <sup>a</sup>	N/A
E1005	Power seating system, recline only, power shear reduction	0	0.1	94	0.1	5,022	4,923	-2
E2331	Control, attendant	0.1	0.1	99	0.1	N/A	N/A	N/A

**Table 7: Medicare Utilization, Expenditures, and Payment Rates for Wheelchair Accessories, by How Frequently Used with Complex Rehabilitative Technology (CRT) Power Group 3 Wheelchairs and Associated Estimated Expenditures (cont.)**

Accessory description	2014 utilization and expenditures				2016 payment rates		
	Total		Estimated when used with CRT power group 3		Average new purchase, urban		
	Utilization (thousands)	Expenditures (millions)	Percent of items	Expenditures (millions)	Unadjusted	50/50 blended CBP-adjusted	Percentage difference
<i>Accessories used with group 3 50-74%</i>	172	32	64	20	--	--	--

HCPCS code	Accessory description	2014 utilization and expenditures				2016 payment rates		
		Total		Estimated when used with CRT power group 3		Average new purchase, urban		
		Utilization (thousands)	Expenditures (millions)	Percent of items	Expenditures (millions)	Unadjusted	50/50 blended CBP-adjusted	Percentage difference
E1028	Mounting hardware for joystick, control interface, or positioning accessory	50	9	70	7	197	164	-17
E2361	Battery, group 22NF	51	6	61	4	132	119	-10
E2620	Back cushion, positioning, planar back with lateral supports, width <22 in.	9	5	70	3	522	454	-13
E0955	Headrest	21	4	54	2	193	164	-15
E2363	Battery, group 24	19	3	63	2	177	154	-13
E2359	Battery, group 34	11	2	71	1	189	180	-5
E2624	Seat cushion, skin protection and positioning, adjustable	4	1	59	0.8	318	305	-4

HCPCS code	Accessory description	2014 utilization and expenditures				2016 payment rates		
		Total		Estimated when used with CRT power group 3		Average new purchase, urban		
		Utilization (thousands)	Expenditures (millions)	Percent of items	Expenditures (millions)	Unadjusted	50/50 blended CBP-adjusted	Percentage difference
E2621	Back cushion, positioning, planar back with lateral supports, width >=22 in.	0.4	0.2	73	0.1	548	482	-12

**Table 7: Medicare Utilization, Expenditures, and Payment Rates for Wheelchair Accessories, by How Frequently Used with Complex Rehabilitative Technology (CRT) Power Group 3 Wheelchairs and Associated Estimated Expenditures (cont.)**

Accessory description		2014 utilization and expenditures				2016 payment rates		
		Total		Estimated when used with CRT power group 3		Average new purchase, urban		
		Utilization (thousands)	Expenditures (millions)	Percent of items	Expenditures (millions)	Unadjusted	50/50 blended CBP-adjusted	Percentage difference
<b>Accessories used with group 3 25-49%</b>		<b>228</b>	<b>42</b>	<b>42</b>	<b>23</b>	<b>--</b>	<b>--</b>	<b>--</b>

HCPCS code	Accessory description	2014 utilization and expenditures				2016 payment rates		
		Total		Estimated when used with CRT power group 3		Average new purchase, urban		
		Utilization (thousands)	Expenditures (millions)	Percent of items	Expenditures (millions)	Unadjusted	50/50 blended CBP-adjusted	Percentage difference
K0108	Wheelchair accessories, not otherwise specified	133	21	49	16	N/A	N/A	N/A
E2617	Back cushion, custom fabricated	3	4	31	1	N/A	N/A	N/A
E2622	Seat cushion, skin protection, adjustable	12	4	34	1	316	302	-4
E2321	Control interface, hand, remote joystick	2	2	33	0.8	1,514	1,439	-5
E2607	Seat cushion, skin protection and positioning	8	2	38	0.8	276	241	-13
E2609	Seat cushion, custom fabricated	2	3	28	0.8	N/A	N/A	N/A
E2392	Tire, caster, solid, replacement only	44	2	25	0.5	51	45	-13
E2376	Controller, expandable, replacement only	0.9	0.9	34	0.4	1,279	1214	-5
E2613	Back cushion, positioning, posterior	3	1	32	0.3	375	336	-10
E2615	Back cushion, positioning, posterior-lateral	3	1	26	0.3	431	391	-9
E2209	Arm trough	4	0.4	41	0.2	102	92	-9
E2605	Seat cushion, positioning	2	0.5	48	0.2	256	229	-11
E0960	Straps, shoulder or chest	4	0.3	41	0.1	87	79	-9

**Table 7: Medicare Utilization, Expenditures, and Payment Rates for Wheelchair Accessories, by How Frequently Used with Complex Rehabilitative Technology (CRT) Power Group 3 Wheelchairs and Associated Estimated Expenditures (cont.)**

Accessory description		2014 utilization and expenditures				2016 payment rates		
		Total		Estimated when used with CRT power group 3		Average new purchase, urban		
HCPCS code	Accessory description	Utilization (thousands)	Expenditures (millions)	Percent of items	Expenditures (millions)	Unadjusted	50/50 blended CBP-adjusted	Percentage difference
<b>Accessories used with group 3 &lt;25%</b>		<b>1,266</b>	<b>119</b>	<b>4</b>	<b>6</b>	--	--	--
E2370	Drive wheel motor and gear box, replacement only	32	20	7	1	765	645	-16
E2374	Control interface, hand or chin, standard remote joystick, replacement only	14	5	18	1	509	486	-5
E2386	Tire, drive wheel, foam filled, replacement only	45	5	13	0.7	143	122	-15
E0973	Armrest, adjustable height, detachable	100	8	3	0.3	103	77	-25
E2366	Battery charger, single mode	27	5	6	0.3	236	193	-18
E2375	Controller, non-expandable, replacement only	11	9	4	0.3	816	747	-8
K0040	Footplate, adjustable angle	21	2	19	0.3	71	61	-14
E2394	Drive wheel, replacement only	25	2	14	0.2	73	65	-11
E2603	Seat cushion, skin protection	7	0.8	19	0.2	144	124	-14
E2387	Tire, caster, foam filled, replacement only	17	0.8	12	0.1	63	54	-14
E2395	Caster wheel, replacement only	22	1	10	0.1	52	46	-11
E2611	Back cushion, general use	49	10	1	0.1	298	230	-23



Totals	2014 utilization and expenditures				2016 payment rates		
	Total		Estimated when used with CRT power group 3		Average new purchase, urban		
	Utilization (thousands)	Expenditures (millions)	Percent of items	Expenditures (millions)	Unadjusted	50/50 blended CBP-adjusted	Percentage difference
<b>Subtotal 50 with highest estimated expenditures when used with CRT power G3</b>	820	256	35	157	--	--	--
<b>Total all accessories</b>	<b>1,733</b>	<b>311</b>	<b>18</b>	<b>159</b>	--	--	--

Source: GAO analysis of Centers for Medicare & Medicaid Services data. | GAO-16-640R

Notes: Utilization is the count of all wheelchair accessories beneficiaries received or rented during 2014. Expenditures include spending by the Medicare program and by beneficiaries. The utilization and expenditures do not include accessories for which Medicare does not pay for separately—such as accessories that are part of the basic equipment package provided with a new wheelchair. The utilization and expenditures on each accessory when used with a given type of chair was estimated based on matching the accessory to the most recent chair the beneficiary received at the same time or prior to the accessory (but no earlier than January 2013), and assuming that the distribution of the items and expenditures that were not matched to a chair were the same as those that were matched. While this methodology may incorrectly match some accessories to chairs, we determined the methodology to be sufficiently reliable for our purposes. The average 2016 50/50 blended competitive bidding program (CBP) adjusted and unadjusted fee schedule payment rates were calculated as the average of the urban rates for each state in the contiguous United States, when the item was provided new and used with a wheelchair included in CBP round 1. If the item only had a published rental rate, we calculated the new purchase rate as the rental rate times 10, per CMS policy. Accessories not paid based on the Medicare fee schedule have their payment rates listed as “N/A”; while accessories with a fee schedule payment rate but no CBP-adjusted rate (as the accessory had not been bid in round 1 rebid, round 2, or round 1 recompetes) just had their CBP-adjusted rate listed as “N/A”. Numbers in this table were rounded; therefore zero indicates a value that rounded down to zero and the sums of columns may not equal the relevant total. Results are limited to the 50 codes with the highest estimated expenditures when used with CRT power group 3 wheelchairs.

<sup>a</sup>Code E2373 was included in both the CBP round 1 and round 1 rebid, but only when it had a special modifier indicating it was a replacement part. The payment rates in this table apply to code E2373 only when it was provided as a new item, which did not have a CBP-adjusted rate.